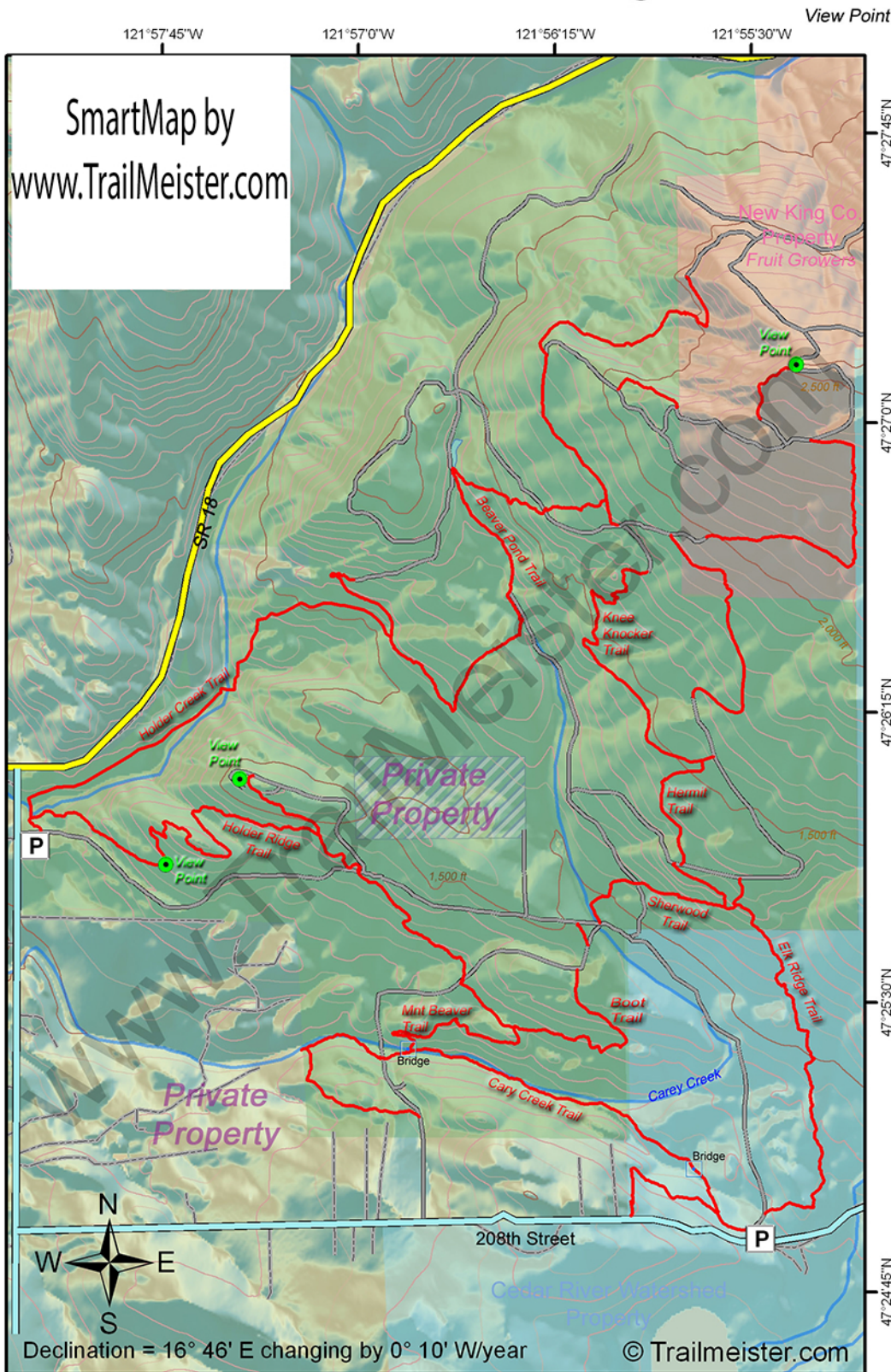


Taylor Mountain Hobart, Washington



Taylor Mountain Forest is located south and east of Tiger Mountain, south of I-90 and east of SR 18, between the communities of Hobart and North Bend in eastern King County. The 1822-acre site, which offers sweeping views of Mount Rainier, forested wetlands, and meadows of wild flowers, provides an important habitat link between the City of Seattle's Cedar River Watershed and Tiger Mountain State Forest.

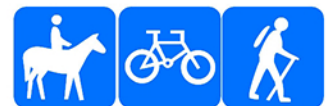
Taylor Mountain's trails are open to hikers, equestrians, and mountain bikers.

Taylor Mountain has two main access points:

- * Junction of Highway 18 and Issaquah-Hobart - On the north side of Issaquah-Hobart is a large parking area for Taylor Mountain.

- * 208th Street - Follow 208th for about 2.3 miles to a wide parking area along the side.

Where ever you park you'll find over 25 miles of miles and logging roads in enough loops to keep you finding new paths for a long time.



Trail Tips

Keep your brain housing group intact by wearing a helmet when you're on the trail. In case you have an accident you'll be glad you did.

- Trail
- Gravel Road
- localroads
- 50 ft contour

DISCLAIMER: The maps and map data are provided "as-is". Maps and data are created from multiple sources that may contain errors. TrailMeister cannot accept any responsibility for errors, omissions, or positional accuracy. Users of this map should be aware that potential hazards and obstructions may exist on the routes shown. TrailMeister in no way warrants the safety or fitness of the suggested routes. The user of this map bears the full responsibility for his or her safety.

Visit www.Trailmeister.com for more trail maps