


Mount Diablo STATE PARK

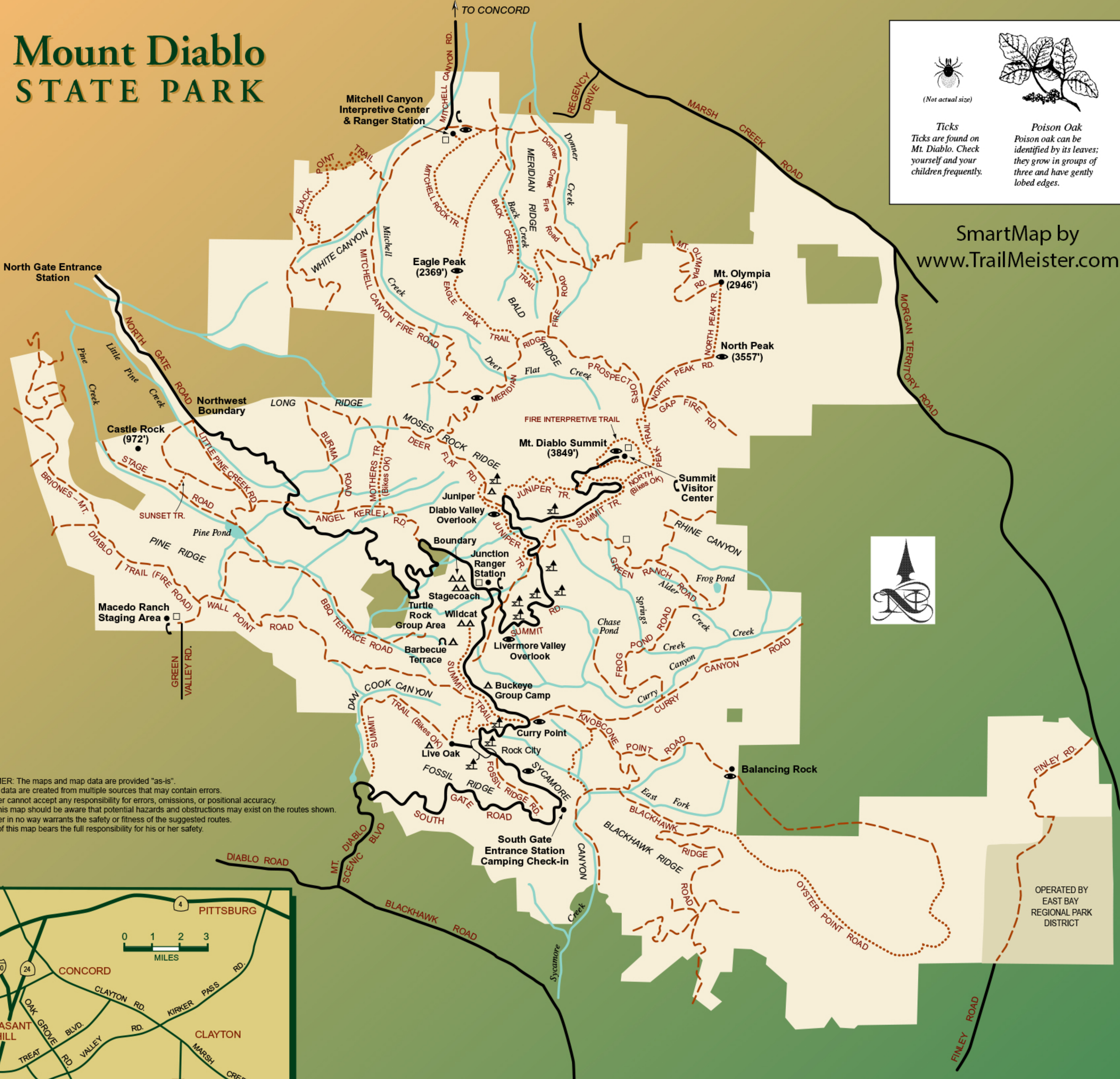


(Not actual size)

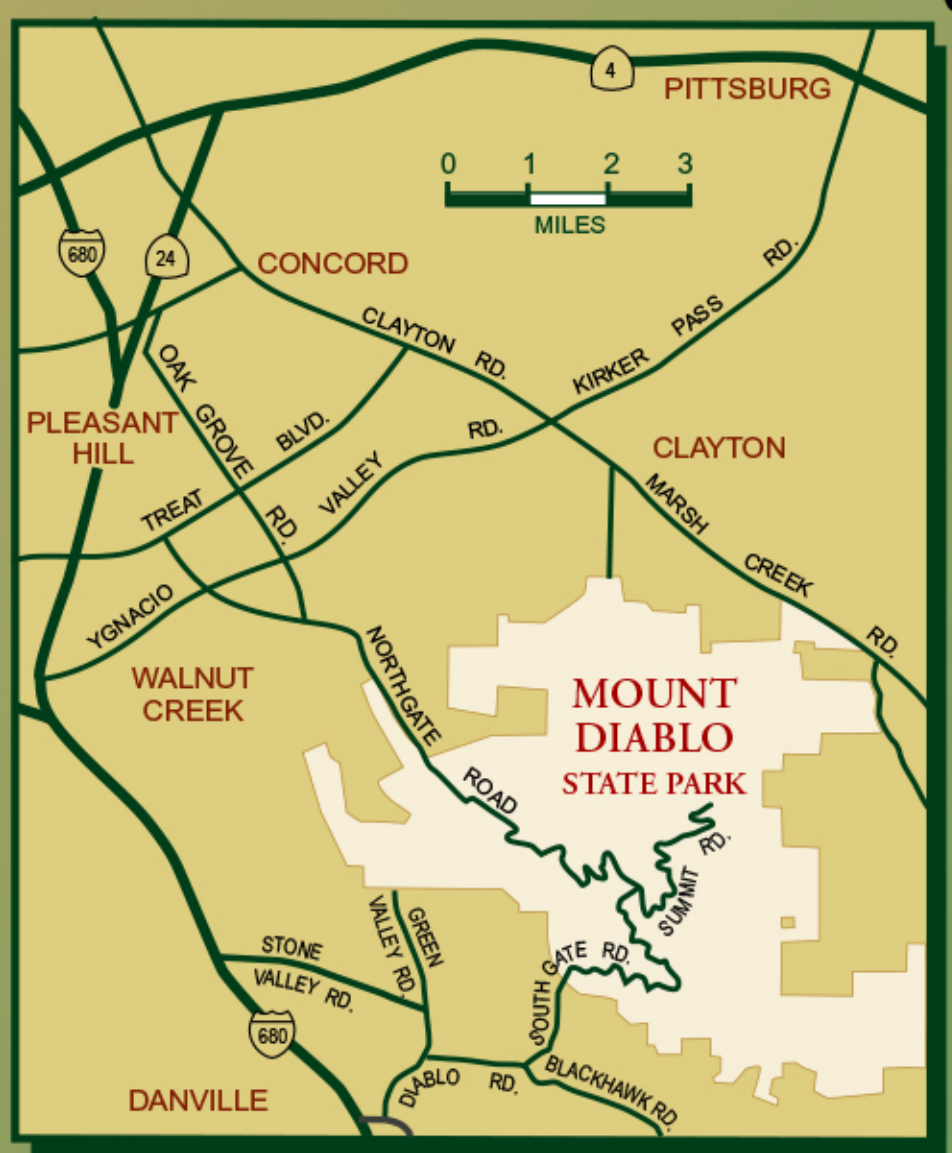
Ticks
Ticks are found on Mt. Diablo. Check yourself and your children frequently.

Poison Oak
Poison oak can be identified by its leaves; they grow in groups of three and have gently lobed edges.

SmartMap by www.TrailMeister.com



DISCLAIMER: The maps and map data are provided "as-is". Maps and data are created from multiple sources that may contain errors. TrailMeister cannot accept any responsibility for errors, omissions, or positional accuracy. Users of this map should be aware that potential hazards and obstructions may exist on the routes shown. TrailMeister in no way warrants the safety or fitness of the suggested routes. The user of this map bears the full responsibility for his or her safety.



Most land adjacent to the park is private property. No trespassing without owner's permission.

	PAVED ROADS
	FIRE ROADS (HIKING BUT NO VEHICLES)
	HIKING TRAILS
	CAMPING
	GROUP CAMPING
	HORSE CAMPING
	PICNIC AREA
	POINT OF INTEREST
	RESTROOMS
	TELEPHONE

OPERATED BY EAST BAY REGIONAL PARK DISTRICT