

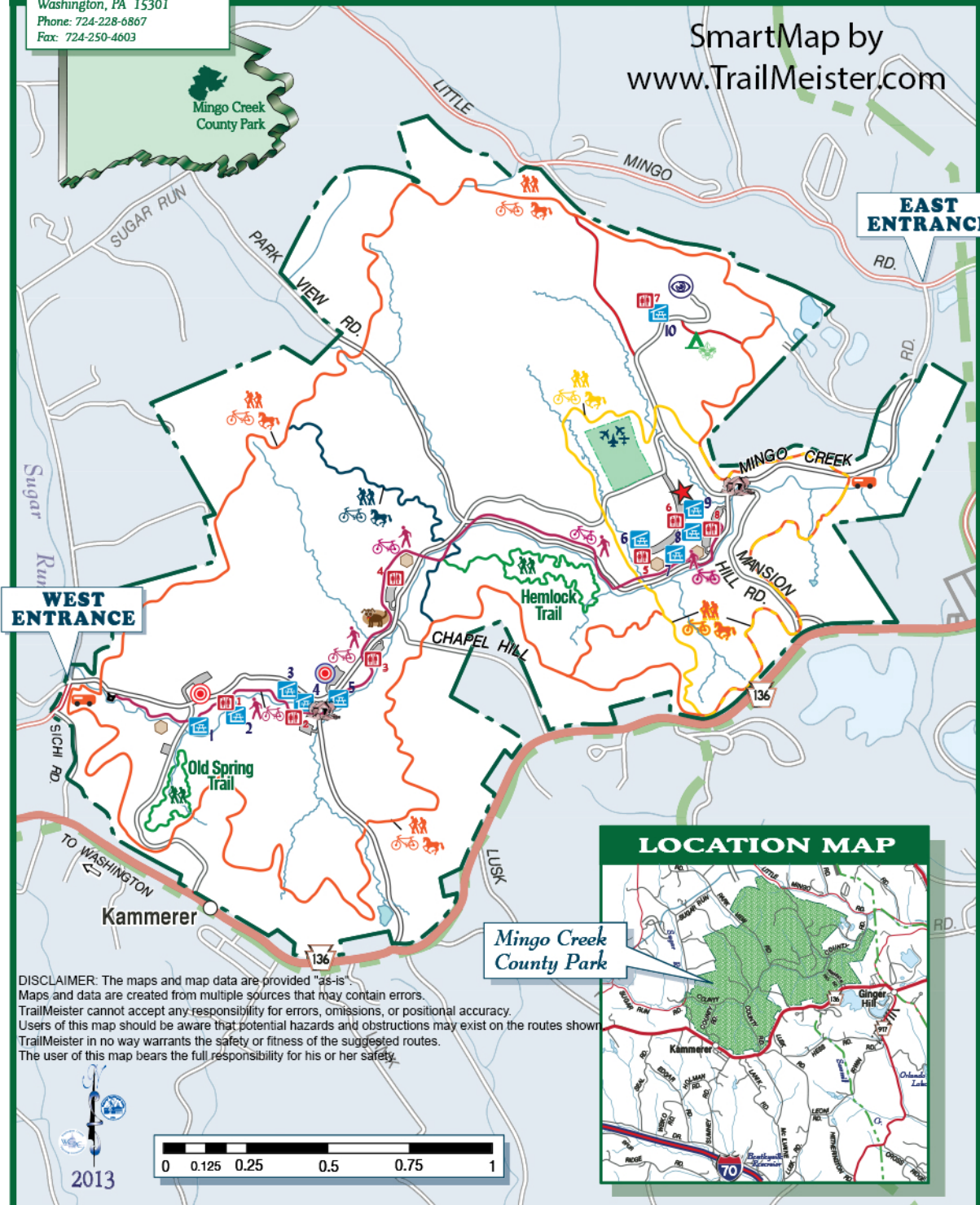
# Mingo Creek County Park

Washington County Department of Parks & Recreation

7 2 4 - 2 2 8 - 6 8 6 7

100 West Beau Street, Suite 705  
Washington, PA 15301  
Phone: 724-228-6867  
Fax: 724-250-4603

SmartMap by  
[www.TrailMeister.com](http://www.TrailMeister.com)



**DISCLAIMER:** The maps and map data are provided "as-is". Maps and data are created from multiple sources that may contain errors. TrailMeister cannot accept any responsibility for errors, omissions, or positional accuracy. Users of this map should be aware that potential hazards and obstructions may exist on the routes shown. TrailMeister in no way warrants the safety or fitness of the suggested routes. The user of this map bears the full responsibility for his or her safety.



## LEGEND

- |                         |  |                      |                      |
|-------------------------|--|----------------------|----------------------|
| Park Boundary           | Paved Walking or Bike Trail                | Shelters             | Scout Camping Area   |
| Paved Roads             | Hiking Only Trail                          | Restrooms            | Covered Bridges      |
| Parking Areas           | One Hour Hiking, Biking Horseback Loop     | Old Park Office      | Model Airplane Field |
| Mingo Creek Observatory | "Cut Across" Hiking, Biking Horseback Loop | New Park Office      |                      |
| Horse Trailer Parking   | Perimeter Hiking, Biking Horseback Loop    | Playgrounds          |                      |
| Dog "Leash Free" Area   |  | Historic Henry House |                      |