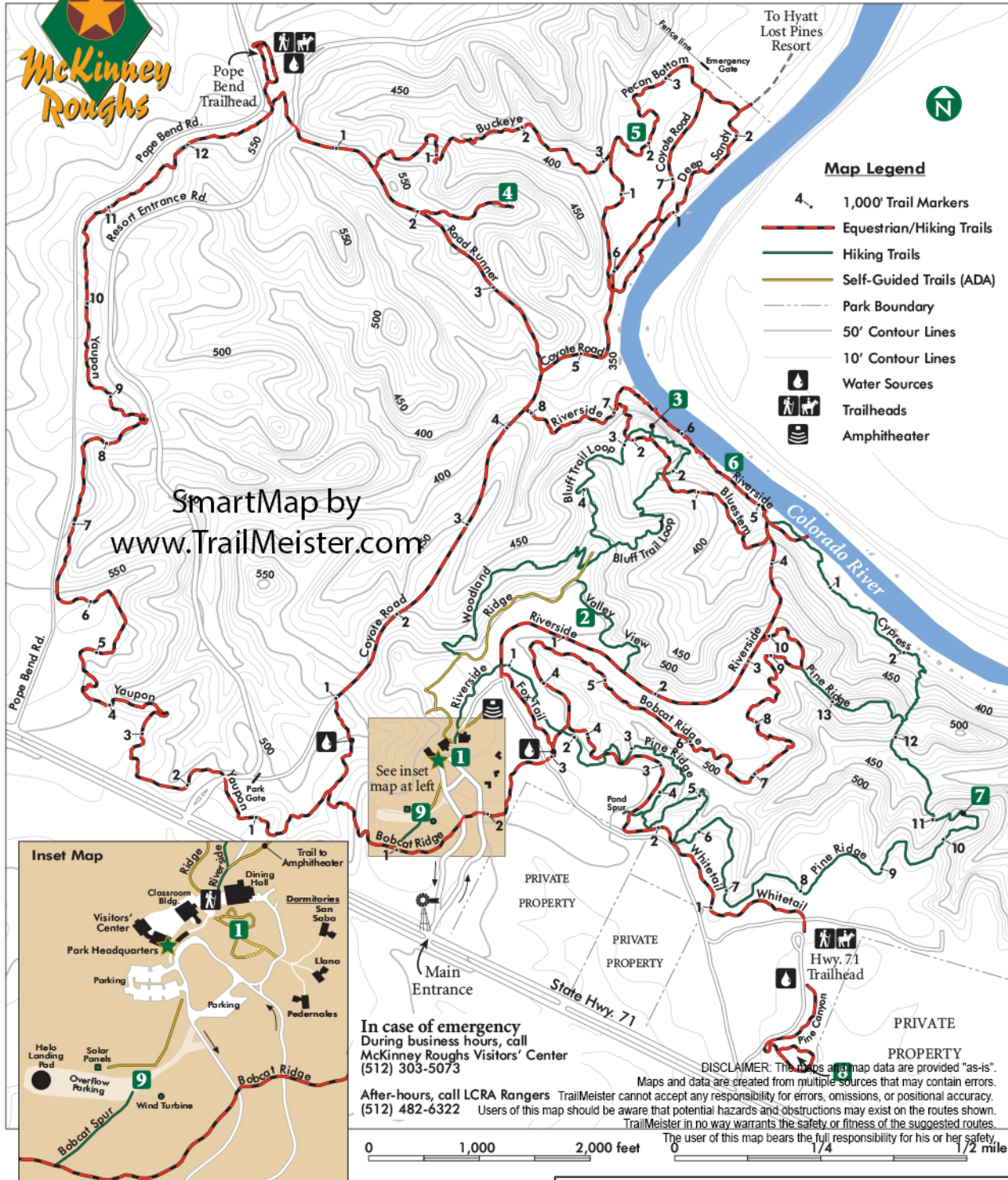


# McKinney Roughs Nature Park



Trails	Mileage
Bluestem	0.5
Bluff Trail Loop	0.9
Bobcat Ridge	1.9
Bobcat Spur	< 0.1
Buckeye	0.6
Coyote Road	1.0
Cypress	0.6
Deep Sandy	0.5
Foxtail	0.2
Meditation Point	0.2
Pecan Bottom	1.0
Pine Canyon	0.4
Pine Ridge	2.7
Pond Spur	< 0.1
Ridge	0.6
Riverside	1.5
Road Runner	0.8
Valley View	0.3
Whitetail Trail	0.8
Woodland	0.5
Yaupon	2.7
<b>Total Trail Mileage</b>	<b>17.9</b>

Trail Hotline: 1-800-776-5272, Ext. 7427

## SUGGESTED HIKES

- From main trailhead**
- 30 minutes: Ridge to Woodland and back
  - 45 minutes: Ridge to Bluff Trail Loop to Woodland
  - 1.5 hours: Riverside to Cypress to Pine Ridge to Riverside
  - 4 hours: Bobcat to Yaupon to Roadrunner to Riverside to Cypress to Pine Ridge to Riverside
- From Highway 71 trailhead**
- 30 minutes: Pine Canyon
  - 1.5 hours: Whitetail to Bobcat Ridge to Riverside to Foxtail to Whitetail
- From Pope Bend trailhead**
- 30 minutes: Roadrunner up to Meditation Point and back
  - 1.5 hours: Roadrunner to Deep Sandy to Buckeye to Roadrunner

## SCENIC POINTS

- Demonstration Trail**  
See conservation demonstrations and learn the names of native plants.
- Valley View**  
See the river valley through the trees.
- Bluff Trail Overlook**  
This sandstone bluff is 82 feet above the river.
- Overlook at Meditation Point**  
Best view of the river in the entire park.
- Giant Pecan Tree**  
The largest tree in our park: almost 12 feet in circumference.
- Riverside Rapids**  
Take a respite from your hike with the quiet sound of water flowing over rocks.
- Pine Ridge Overlook**  
While sitting in the pines, you can glimpse the river and valley from here.
- Pine Canyon**  
Nature reclaimed this gravel quarry, transforming it into a serene oasis for hikers and horses.
- Renewable Energy Exhibit**  
Demonstration wind turbine and solar panels.