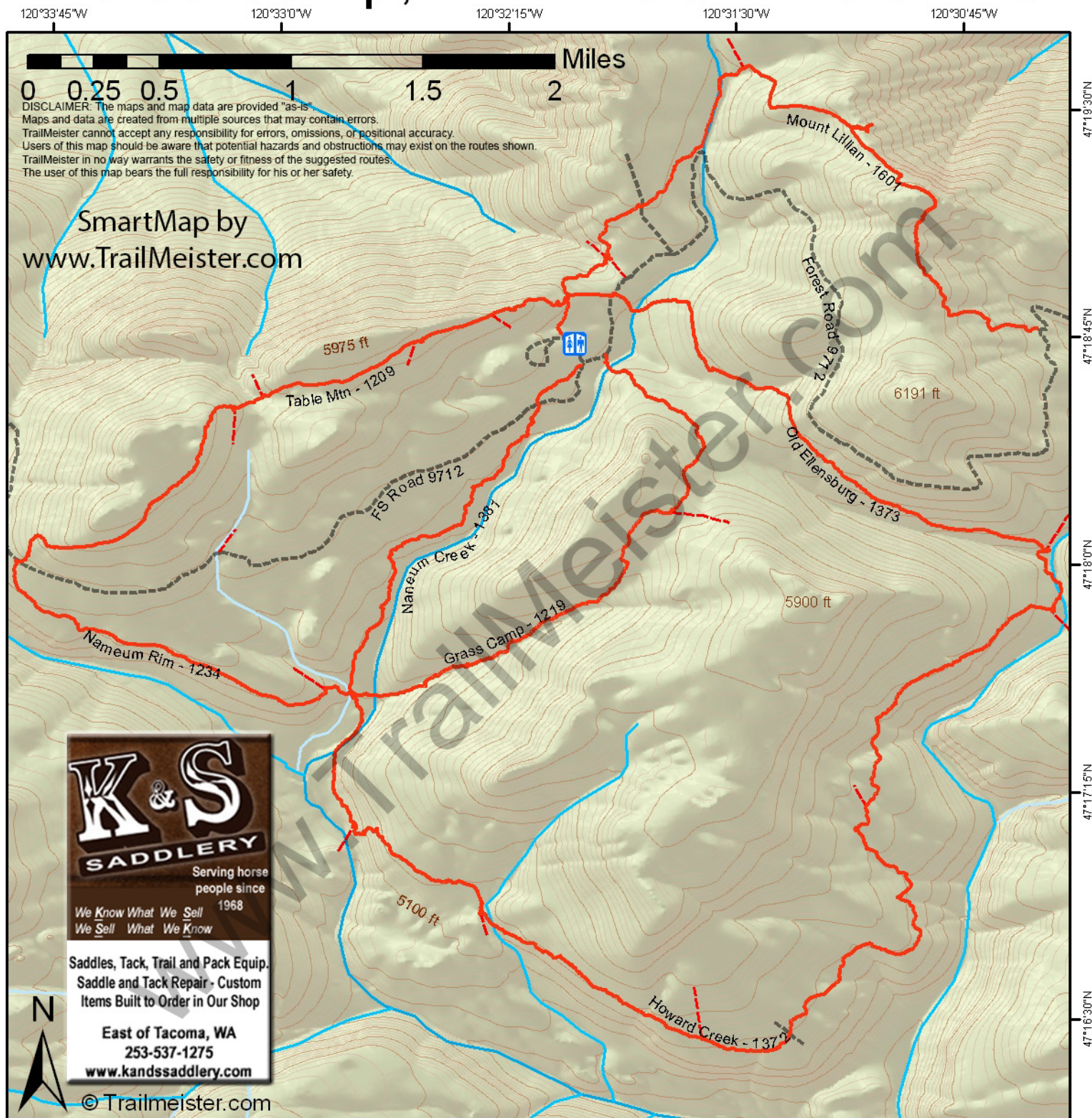


Haney Meadows - Ken Wilcox Horse Camp, WA - LOOP ROUTES



- Loop Trails
- - - Intersecting Trails
- = = = = Forest Service Road



Ken Wilcox Horse Camp in Haney Meadows, located in the Wenatchee National Forest between Leavenworth and Cle Elum Washington, is simply a wonderful spot to spend a weekend or a week of camping.

Access the camp from Highway 97 at Blewett Pass. Take Forest Service road 9716 to FS 9712 for 10 miles to reach the Ken Wilcox Horse Camp along Haney Meadow.

Please keep dogs on leashes while in the campground.