

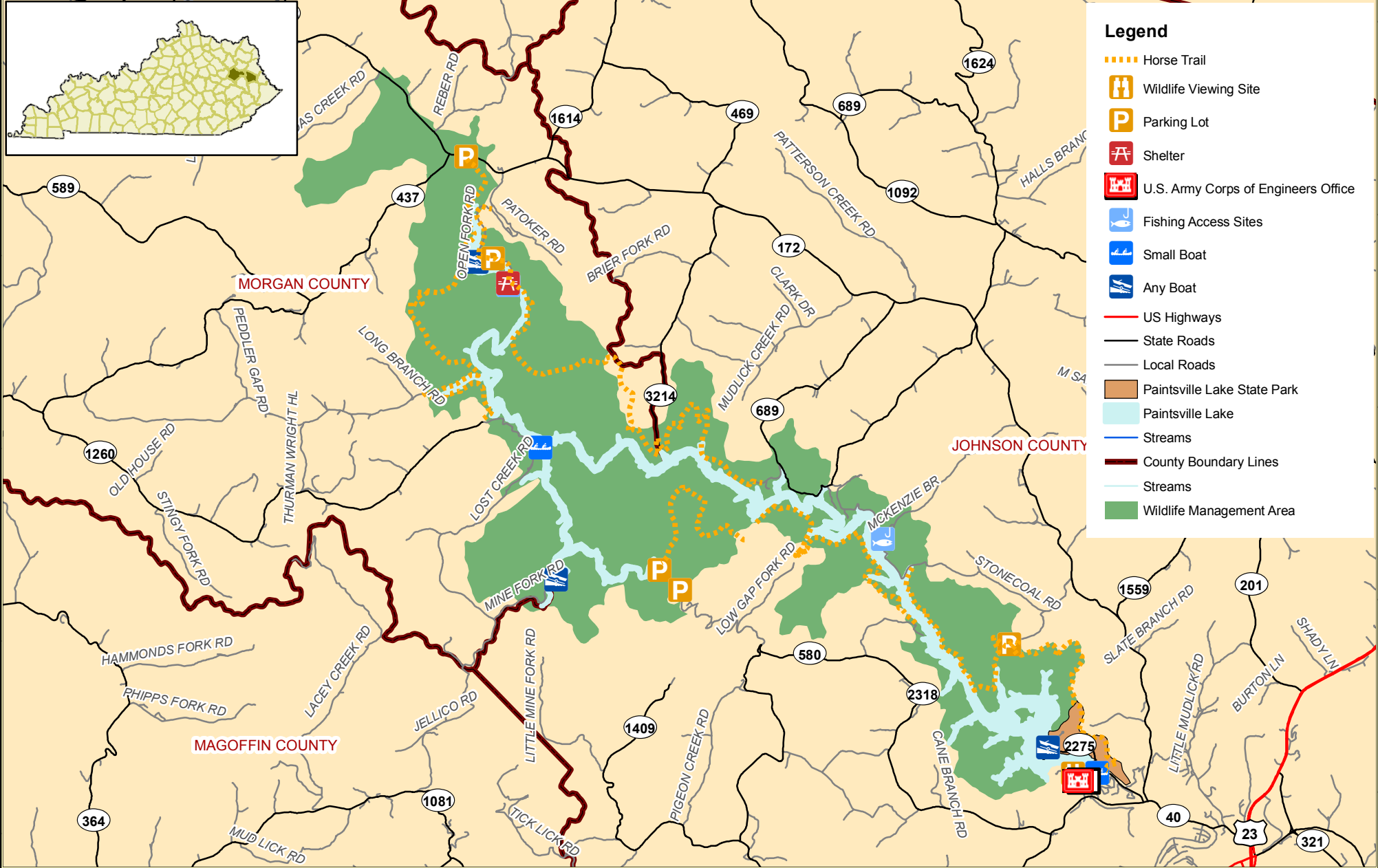


Paintsville Lake WMA

Acres 11,254
 Max Elev ft 1,265
 Min Elev ft 715



37°58'N
37°56'N
37°54'N
37°52'N
37°50'N



- Legend**
- Horse Trail
 - Wildlife Viewing Site
 - Parking Lot
 - Shelter
 - U.S. Army Corps of Engineers Office
 - Fishing Access Sites
 - Small Boat
 - Any Boat
 - US Highways
 - State Roads
 - Local Roads
 - Paintsville Lake State Park
 - Paintsville Lake
 - Streams
 - County Boundary Lines
 - Streams
 - Wildlife Management Area

83°6'W 83°4'W 83°2'W 83°0'W 82°58'W 82°56'W 82°54'W 82°52'W 82°50'W



"Limitation of Liability: KY Dept. of Fish & Wildlife Resources does not know of any inaccuracies or defects in the information in this work and make "NO REPRESENTATIONS REGARDING THE FITNESS FOR USE OF THE INFORMATION OR DATA, FURNISHED HEREIN." Copyright."

3/31/2009



1:100,000
 0 0.5 1 1.5 2 Miles