

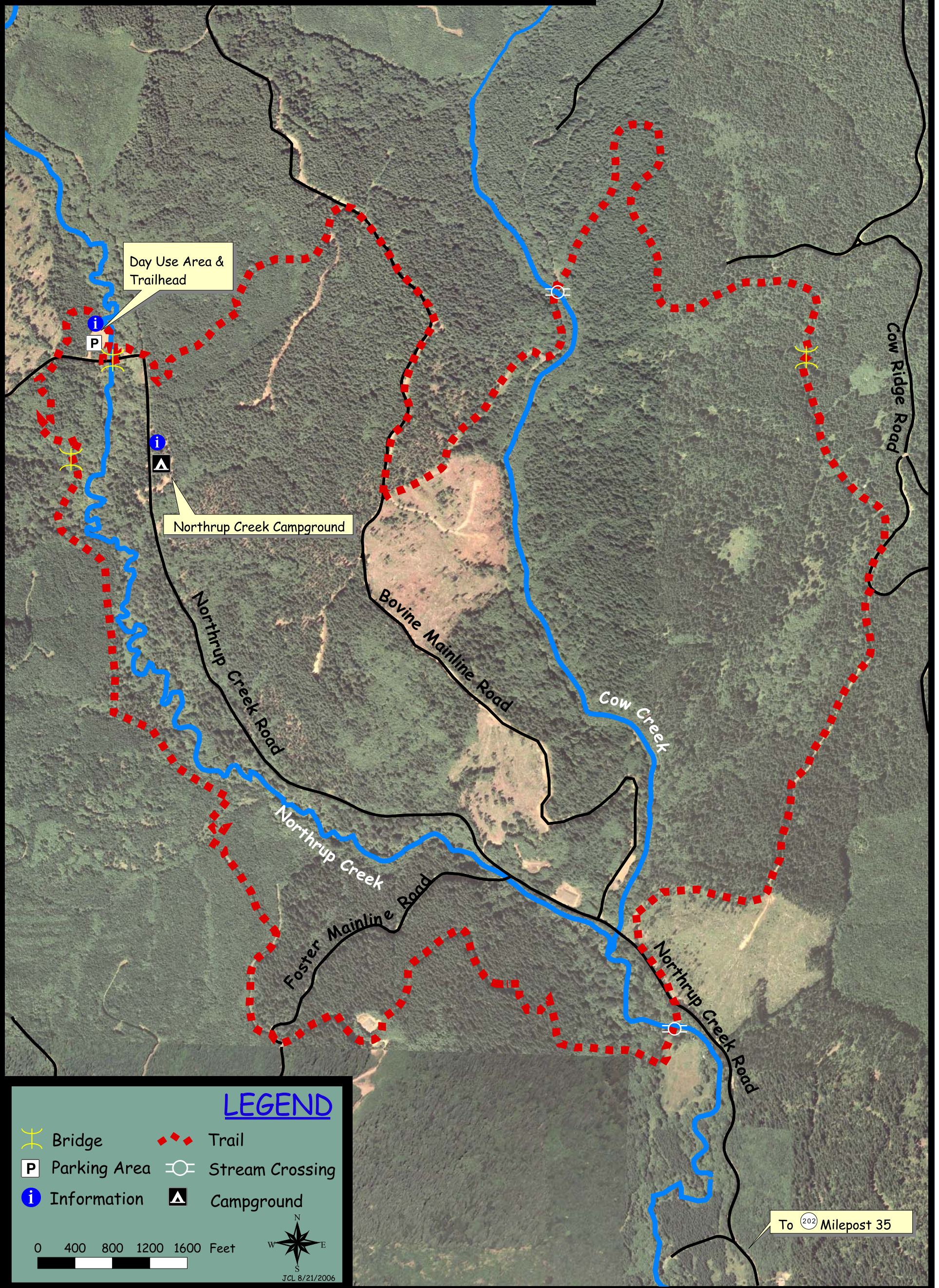
NORTHROP CREEK TRAIL

Approx. 8.5 Mile Loop



Conditions:

Moderate difficulty; varies with weather conditions. Diverse terrain for non-motorized use.



LEGEND

- Bridge
- Trail
- Parking Area
- Stream Crossing
- Information
- Campground

0 400 800 1200 1600 Feet



JCL 8/21/2006

To Milepost 35