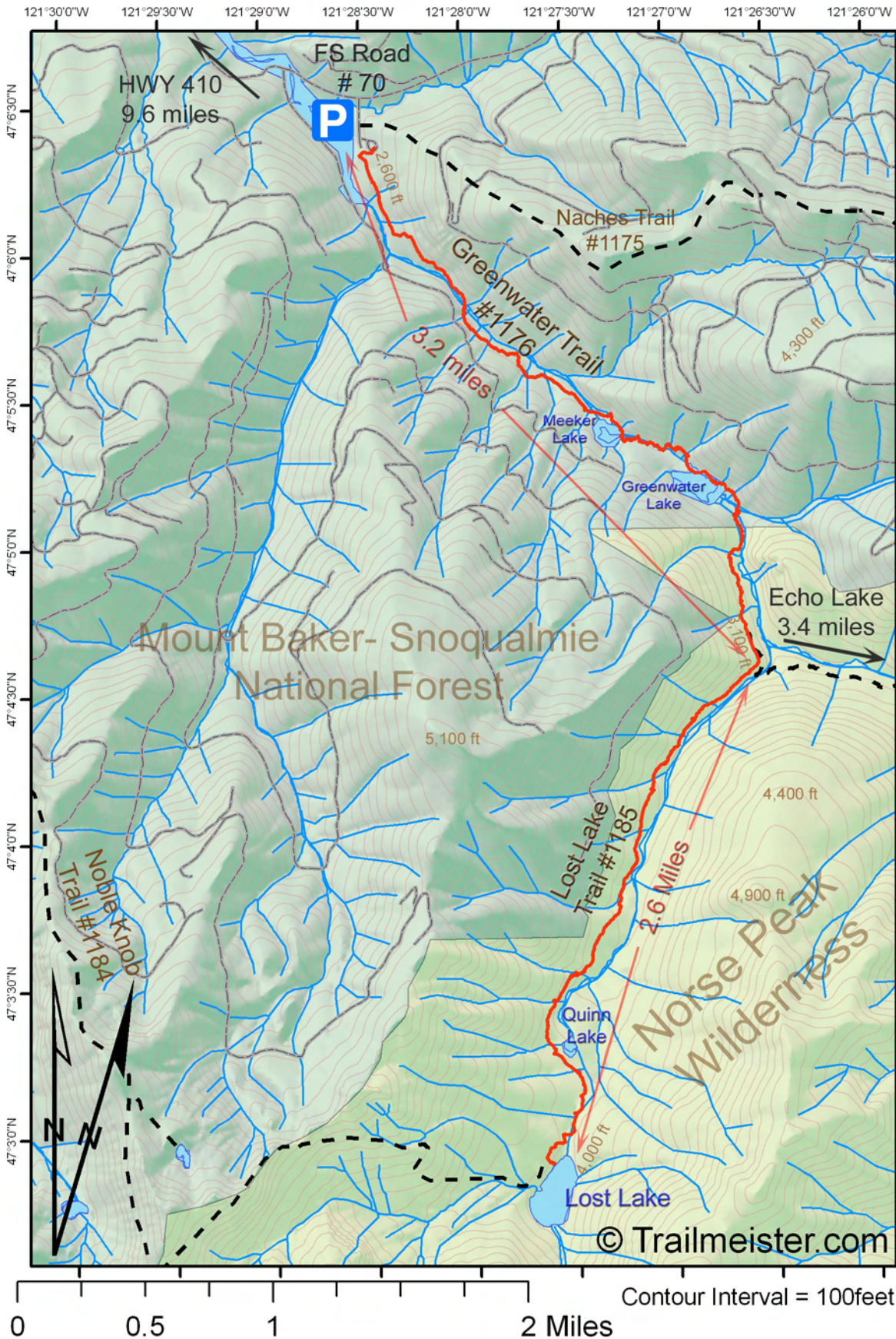


Greenwater Trailhead to Lost Lake

Greenwater, WA



Greenwater Trailhead – East on State Highway 410 from Enumclaw 20.3 miles to Greenwater Road #70. Left onto FS Road #70 and follow 9.6 miles to trail sign. Turn right onto Road #7033, the trailhead is on the right side of road after 0.5 mile. Trailhead Facilities: 10 horse trailer parking, 20 vehicle parking spaces, and vault toilet.

Greenwater Trail #1176 – Depart the trailhead and climb along the Greenwater River through old growth timber. Meet Lower Greenwater Lake (also known as Meeker Lake) at mile point 1.7 and Upper Greenwater Lake at mile point 2.2. Just above Upper Greenwater Lake enter the Norse Peak Wilderness. At mile point 3.2, the Greenwater Trail junctions with Lost Lake Trail #1185.

Lost Lake Trail #1185 - Head south (right) through old growth forest. At 5.2 miles in Quinn Lake will be seen to the north. Arrive at Lost Lake 5.8 miles from the start. Good campsites and horse grazing areas are abundant near the lake. Beyond Lost Lake the trail climbs from Lost Lake through sub-alpine timber and open country to the junction with Noble Knob Trail #1184.



Declination = 16° 40' E changing by 0° 10' W/year

Visit www.Trailmeister.com for more trail maps