

Map Legend	
	Horse Trail
	Mountain Bike Trail
	Open Forest Roads
	County Roads
	Forest Service Land
	Private Land
	Trail Segment Number

Hemlock Ave

12 Mile Rd.

To 13 Mile Rd.

FR 5134

11 Mile Rd.

Pine Street

Michon Pipeline

Pipeline

Hickory Dr.

Hungerford Lake Dr.

Horse Day Use Trailhead

Hungerford Campground

Boat Launch Lake Campsites (No Horses)

Mountain Bike and Ski Trailhead

Hungerford Lake Dr. IVE

Cypress Ave.

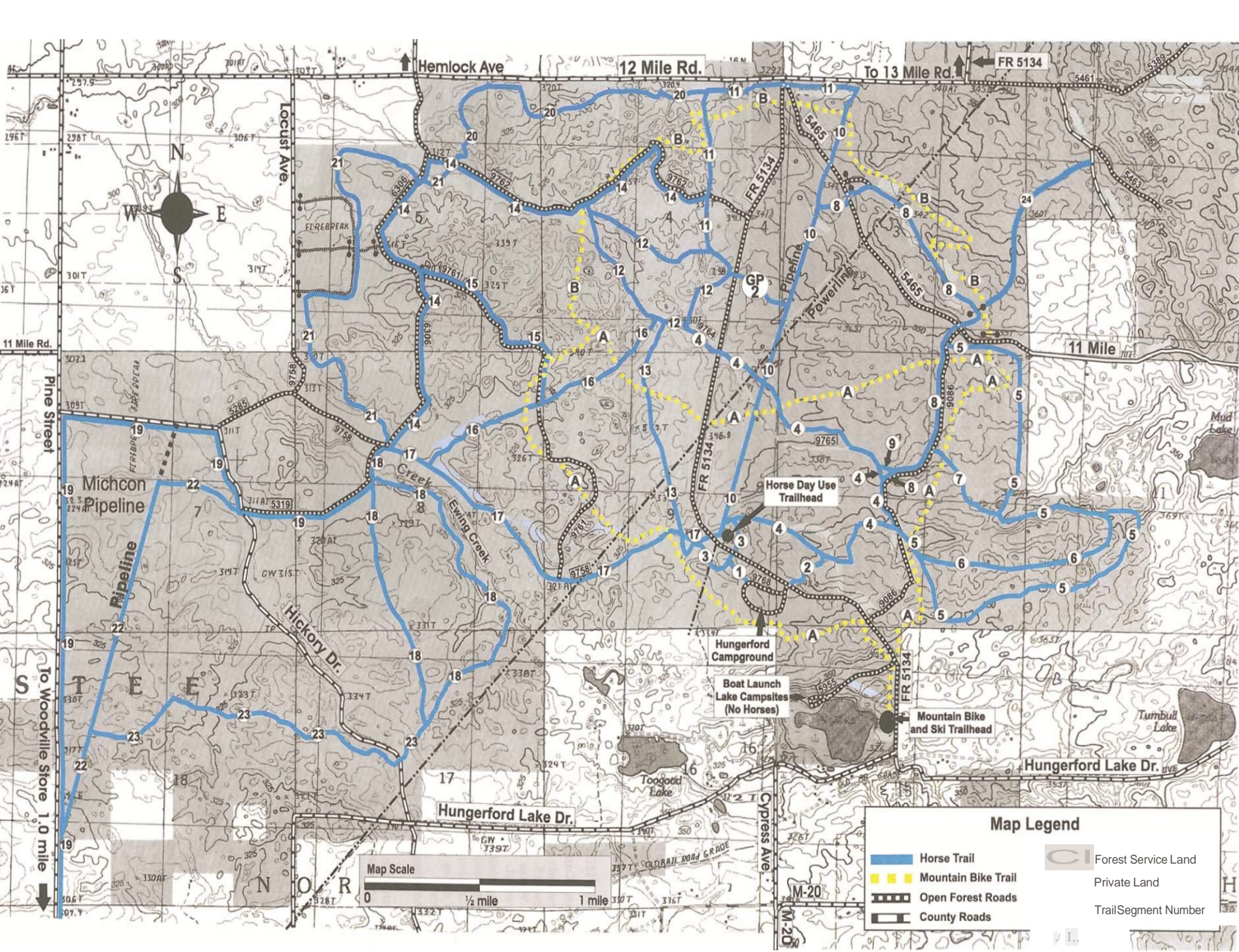
M-20

M-20

Mud Lake

Turnbull Lake

Toogold Lake





## Conduct and Ethics

### Campground Camping -

- Campgrounds open from April 15 to November 1. All sites first come, first served. Water is available at the main campground.
- Overnight visits limited to a 14-day period per stay.
- Campsites must be occupied the first night of a stay and every 24 hours thereafter.
- Generators may be used from 6 a.m. to 10 p.m.
- Each campsite is limited to 2 vehicles and 8 people and A) 1 Horse Trailer and 1 Camping Unit or B) 2 Camping Units (See chart on information board).
- Dogs must be leashed in campgrounds.

### Dispersed Camping -

- Dispersed camping is allowed. No camping in areas posted closed.
- Campsites must be 150 feet from roads and trails and 200 feet from water.

### Group Campsite -

- Contact Recreation.gov at 1-877-444-6777 for reservations.

### Campfires -

- Use only dead and down wood for personal campfires.
- Firewood collection is limited to personal use on Forest Service lands without a permit.

### Horses

- must be tied to picket poles in the campground;
- cannot be tied directly to trees;
- are not allowed in Hungerford Lake, Ewing Creek, or other bodies of water.
- Building of corrals in campground is prohibited.

## A Partnership in Progress

The Hungerford area is supported by a volunteer and financial partnership between the Hungerford Trail Riders Association and U.S. Forest Service. For more information contact the Trails Coordinator at (231) 745-4631



Hungerford Campsite

### Trail Mileage

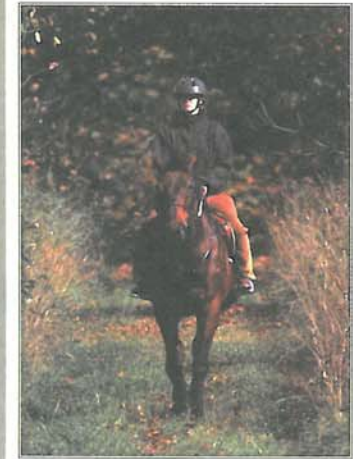
Segment	Miles	Segment	Miles	Segment	Miles
<b>Horse Trail</b>					
1	.14	9	.05	17	1.5
2	.21	10	1.7	18	2.6
3	.67	11	1.1	19	5.6
4	2.2	12	1.9	20	2.4
5	4.5	13	.9	21	3.1
6	1.5	14	3.1	22	2.0
7	.7	15	1.0	23	2.1
8	1.9	16	1.3		
<b>Mountain Bike Trail</b>					
A	6.4	B	4.2		



United States Department of Agriculture  
Forest Service

# Hungerford

## Recreation Area



Huron-Manistee National Forests