

Carter Caves State Resort Park TRAIL MAP

Two state nature preserves are located within the borders of Carter Caves State Resort Park. Both areas were dedicated into the nature preserves system in 1981 to protect several rare species and habitat. Bat Cave harbors one of the largest wintering populations of the federally endangered Indiana bat. The bats begin cave hibernation in October with sufficient fat reserves to survive until spring. The steep north-facing slopes at Cascade Caverns support two rare plants usually found in cooler northern climates; the Mountain maple and the Canadian yew. The Kentucky Department of Parks recognized the significance of these areas and pursued the highest level of protection possible for Bat Cave, 128 surface acres surrounding the cave's openings and 18 acres of land above Cascade Caverns.

KHT Kiser Hollow Trail - 9.0 mi
A multi use trail that passes the mature hardwood of Tygart State Forest, the scenic Smoky Creek valley and old home places in Kiser Hollow. This trail is steep and rocky in places. Avoid the Tygart State Forest section of this trail or wear blaze orange during designated hunting seasons. Yellow blazes mark trail.

CBT Cave Branch Trail - 2.2 mi
A multi use trail within Tygart State Forest that explores the picturesque valley of the stream less Cave Branch Creek which is flowing underground through Bat Cave before it resurfaces near the park entrance. Avoid this trail or wear blaze orange during designated hunting seasons. Blue blazes mark trail.

CRT Collings Ridge Top Trail - 3.4 mi
This multi use ridgetop trail within Tygart State Forest follows the border around a hardwood tree reforestation project. During the warm season users need to be prepared for tick and poison ivy encounters. The trail provides some great overlooks, especially during the fall and winter months. Avoid this trail or wear blaze orange during designated hunting seasons. Orange blazes mark trail.

TBT Three Bridges Trail - 3.5 mi
This popular trail highlights three of the parks natural bridges including Smoky Bridge (the park's largest), Raven Bridge and Fern Bridge. The trail overlooks many vistas of Smoky Valley Lake and travels alongside many impressive sandstone cliffs. Red blazes mark trail.

RBT Raven Bridge Trail - 0.7 mi
This trail is the most direct and easiest route to the delicately balanced sandstone arch, Raven Bridge. This ridgetop trail is fairly level and can be combined with the three bridges trail to make a loop trail from the lodge. Blue blazes mark trail.

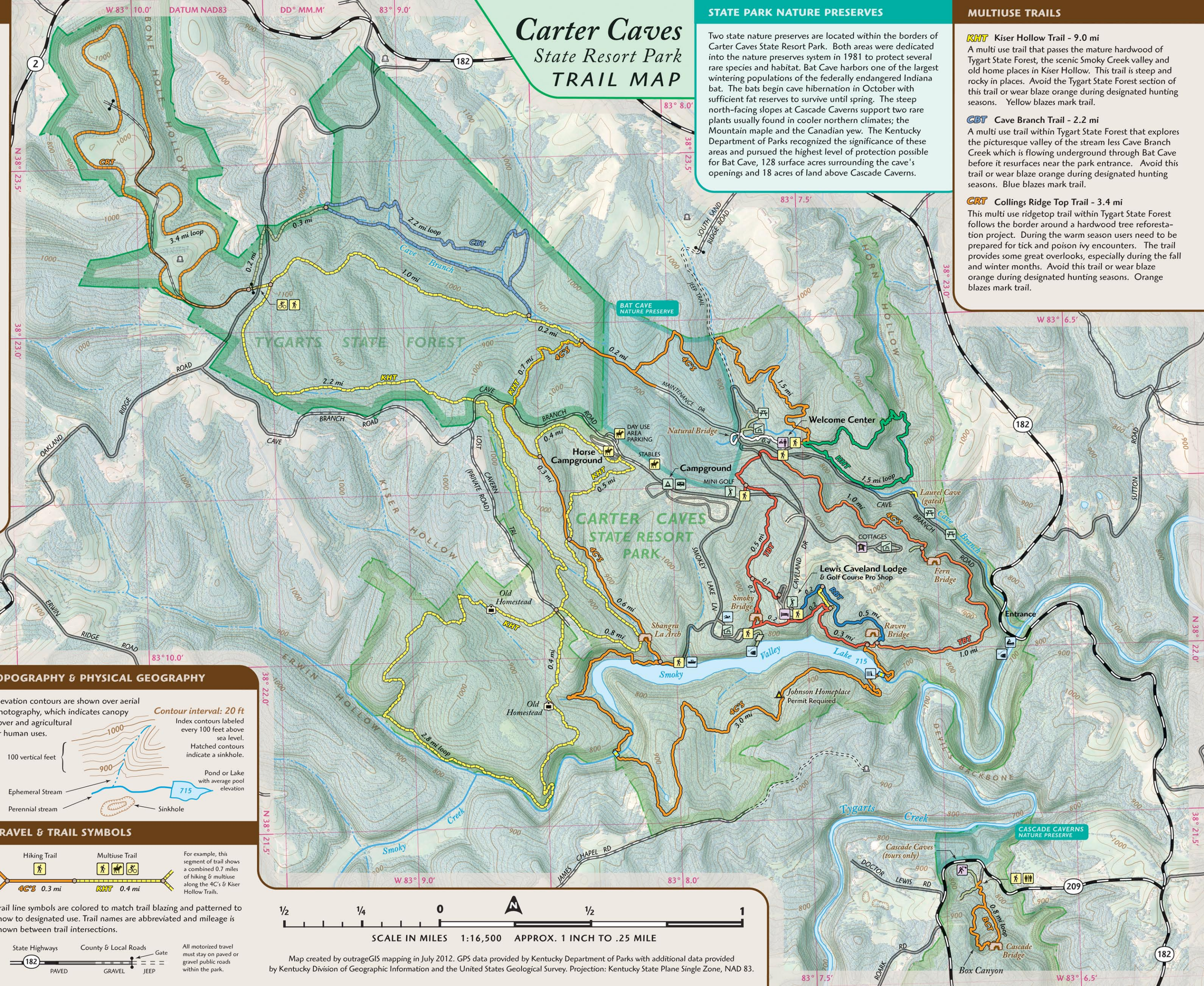
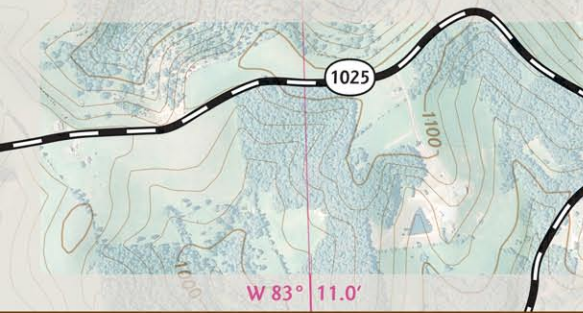
RHT Rockhouse Trail - 0.1 mi
A short connector trail between TBT and RBT trails. The trail takes you alongside some striking sandstone cliff faces. Yellow blazes mark trail.

HHT Horn Hollow Trail - 1.5 mi
This hilly, but scenic trail takes you from the ridges into the streamless valley of Horn Hollow, where you see multiple cave entrances. This trail is especially rewarding during the spring wildflower season from April - May. Green blazes mark trail.

NBT Natural Bridge Trail - 0.5 mi
This impressive limestone natural bridge is one of the landmarks of the area and may be considered unique in Kentucky; it is the only natural bridge in Kentucky that supports a paved highway. White Blazes mark the trail.

BCT Box Canyon Trail - 0.8 mi
One of our most scenic trails and passes unusual geologic features in the park, including the Cascade natural bridge, the Box Canyon and the wind tunnel. This trail is hilly and fairly difficult. Orange blazes mark trail.

4C'S Carter Caves Cross Country Trail - 8.3 mi
One of our longer hiking trails that visits the park's backcountry. Two suspension bridges are found on this trail. Johnson Home place is a backcountry campsite that requires a permit. A short portion of this trail is within Tygart State Forest and allows equestrian and mountain bike use. Avoid this section of the trail or wear blaze orange during designated hunting seasons. Orange blazes mark the trail.



MAP SYMBOLS

- Foot Travel Trailhead
- Equestrian Trailhead & Facilities
- Mountain Bike Trailhead
- Restroom
- Backcountry Camp Permit Required
- Tent Campsites
- RV Campsites
- Picnic Shelter
- Picnic Area
- Golfing Facilities
- Playground
- Welcome Center
- Lewis Caveland Lodge
- Cottages
- Cave Tour
- Scenic Arch
- Historic Feature
- Cemetery
- Trail Intersection
- Suspension Foot Bridge
- Stairs
- Gate
- Swimming Pool
- Canoe Launch
- Fishing Area
- Dam
- Boat Ramp
- Golf Course Fairway Number

TOPOGRAPHY & PHYSICAL GEOGRAPHY

Elevation contours are shown over aerial photography, which indicates canopy cover and agricultural or human uses.

Contour interval: 20 ft
Index contours labeled every 100 feet above sea level.
Hatched contours indicate a sinkhole.

100 vertical feet

Ephemeral Stream

Perennial stream

Pond or Lake with average pool elevation

Sinkhole

TRAVEL & TRAIL SYMBOLS

Hiking Trail

Multiuse Trail

For example, this segment of trail shows a combined 0.7 miles of hiking & multiuse along the 4C's & Kiser Hollow Trails.

Trail line symbols are colored to match trail blazing and patterned to show to designated use. Trail names are abbreviated and mileage is shown between trail intersections.

State Highways

County & Local Roads

Gate

All motorized travel must stay on paved or gravel public roads within the park.

PAVED GRAVEL JEEP

MAP SYMBOLS

- Foot Travel Trailhead
- Equestrian Trailhead & Facilities
- Mountain Bike Trailhead
- Restroom
- Backcountry Camp Permit Required
- Tent Campsites
- RV Campsites
- Picnic Shelter
- Picnic Area
- Golfing Facilities
- Playground
- Welcome Center
- Lewis Caveland Lodge
- Cottages
- Cave Tour
- Scenic Arch
- Historic Feature
- Cemetery
- Trail Intersection
- Suspension Foot Bridge
- Stairs
- Gate
- Swimming Pool
- Canoe Launch
- Fishing Area
- Dam
- Boat Ramp
- Golf Course Fairway Number

TOPOGRAPHY & PHYSICAL GEOGRAPHY

Elevation contours are shown over aerial photography, which indicates canopy cover and agricultural or human uses.

Contour interval: 20 ft
Index contours labeled every 100 feet above sea level.
Hatched contours indicate a sinkhole.

100 vertical feet

Ephemeral Stream

Perennial stream

Pond or Lake with average pool elevation

Sinkhole

TRAVEL & TRAIL SYMBOLS

Hiking Trail

Multiuse Trail

For example, this segment of trail shows a combined 0.7 miles of hiking & multiuse along the 4C's & Kiser Hollow Trails.

Trail line symbols are colored to match trail blazing and patterned to show to designated use. Trail names are abbreviated and mileage is shown between trail intersections.

State Highways

County & Local Roads

Gate

All motorized travel must stay on paved or gravel public roads within the park.

PAVED GRAVEL JEEP



Map created by outrageGIS mapping in July 2012. GPS data provided by Kentucky Department of Parks with additional data provided by Kentucky Division of Geographic Information and the United States Geological Survey. Projection: Kentucky State Plane Single Zone, NAD 83.

Carter Caves State Resort Park



TRAIL MAP

KENTUCKY DEPARTMENT OF PARKS
parks.ky.gov



Carter Caves State Resort Park

344 Caveland Drive (606) 286-4411
Olive Hill, KY Reservations
41164-9032 (800) 325-0059



Nestled in the hills of Eastern Kentucky, Carter Caves is 2,000 acres of wooded hills rich in plants, animals and geologic formations both above and below ground. The park offers year round guided tours of some of the region's most impressive cave systems, including tours of Cascade Cave and X-Cave.

The park has temporarily closed some caves and is implementing decontamination efforts in an attempt to slow the spread of White Nose Syndrome, a disease that kills hibernating bat populations in Carter Caves. Over 50% of the total endangered Indiana Bat populations hibernating in the state of Kentucky find their winter homes in Bat, Saltpetre and Laurel Caves – all located on the park.

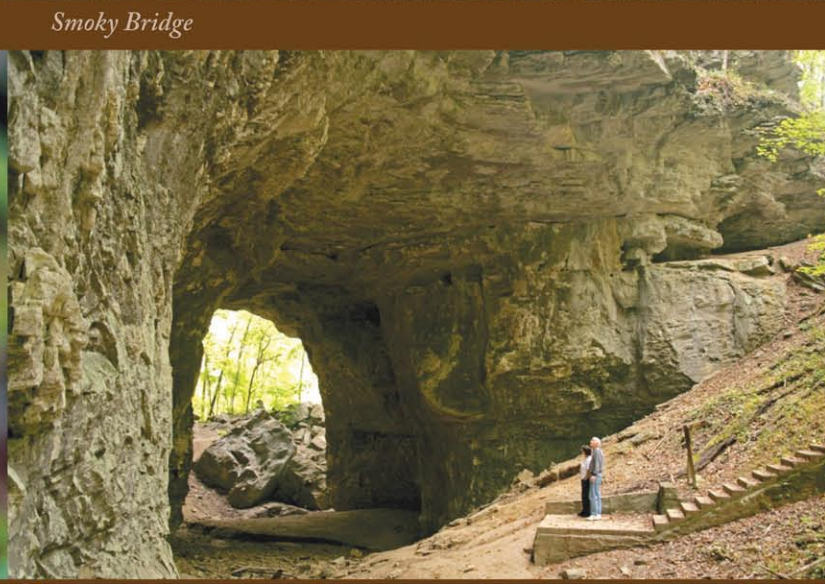
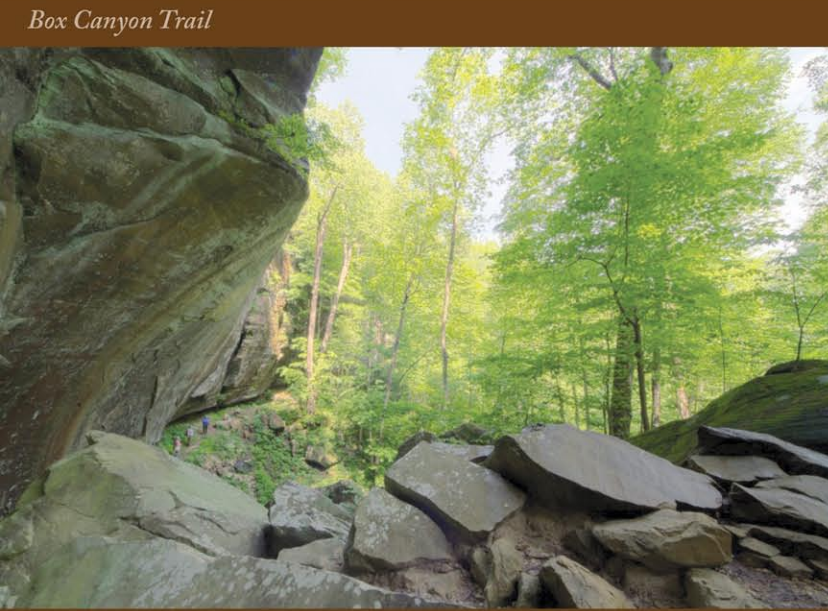
Above ground, the park has close to 30 miles of trails highlighting many fascinating geological features, including natural bridges, arches, caves, sinkholes, cliffs and a boxed canyon. The trail system supports over 15 miles of multi-use trails that offer hikers, mountain bikers and horseback riders a place to escape.

Paddlers and anglers can enjoy some good water time on either the secluded 45-acre Smoky Valley Lake or seasonally along a stretch of Tygarts Creek that borders a portion of the park. Other day amenities include a 9-hole regulation golf course, playground areas, tennis courts, a basketball court, picnic areas and shelters.

Seasonally, visitors can enjoy guided horseback riding, a swimming pool with a diving well, an 18-hole miniature golf course, guided Smoky Lake canoe trips and summer recreation and naturalist programs. Special events are regularly scheduled throughout the year, including Winter Adventure Weekend, Pioneer Life Week and the Fraley Mountain Music Festival.

Staying over for several days is made easy with several overnight accommodations available, including a 28-room field stone lodge and 11 modern, 2-bedroom vacation cottages. The campground provides many overnight options including RV sites, tent sites, bunkhouses and equestrian campsites. Tierney's Cavern restaurant, open daily for breakfast, lunch, and dinner, offers a wide variety of sandwiches and country dishes.

Trails are managed as part of the natural environment. Visitors must be prepared to meet and accept nature on its own terms. All plants, animals and natural park features are protected by state law against removal, destruction and injury. For your safety please stay on designated trails, wear proper footwear, avoid hiking alone and all trails close at dusk.



TRAIL CONDITIONS

All of the park's trails are hilly, and many pass near high cliff areas. For your safety, stay on the marked trails and walk the trails only during daylight hours. Parents should accompany children at all times. Wear comfortable shoes with textured soles since all trails have natural surfaces that may be rocky or uneven. On the longer trails, a water supply may be needed since there are no water sources on any of the trails. Snakes are rarely encountered, but if they are, leave them alone. It is illegal to harm any animal in the park. Be aware of poison ivy, it is common!

0 1/8 1/4
SCALE IN MILES 1:6,800 1 IN TO 570 FT