



ST. CROIX STATE FOREST

Roads and Trails

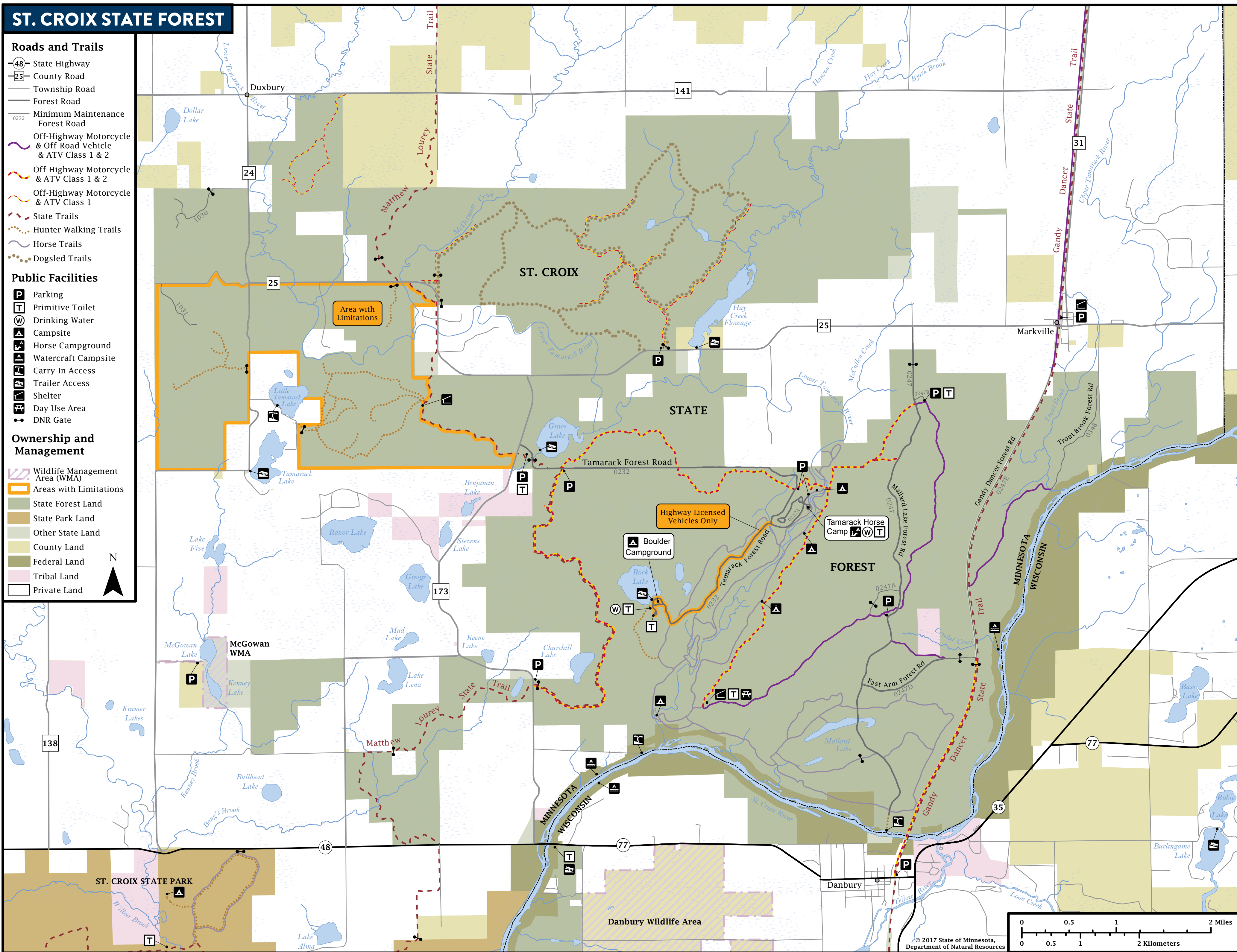
- 48 State Highway
- 25 County Road
- Township Road
- Forest Road
- Minimum Maintenance Forest Road
- Off-Highway Motorcycle & Off-Road Vehicle & ATV Class 1 & 2
- Off-Highway Motorcycle & ATV Class 1 & 2
- Off-Highway Motorcycle & ATV Class 1
- State Trails
- Hunter Walking Trails
- Horse Trails
- Dogsled Trails

Public Facilities

- P Parking
- T Primitive Toilet
- W Drinking Water
- A Campsite
- H Horse Campground
- Watercraft Campsite
- Carry-In Access
- Trailer Access
- Shelter
- Day Use Area
- DNR Gate

Ownership and Management

- Wildlife Management Area (WMA)
- Areas with Limitations
- State Forest Land
- State Park Land
- Other State Land
- County Land
- Federal Land
- Tribal Land
- Private Land



ST. CROIX STATE FOREST 42,153 ACRES • ESTABLISHED 1943

A WORKING FOREST: From year to year, you may see changes in this forest. The DNR manages the trees, water, and wildlife in state forests for everyone to keep them healthy and meet recreational, environmental, and economic goals. Trees are harvested to make a variety of products, such as lumber and building materials, pulp for making paper, pallets, fencing, and telephone poles. Through careful planning, harvesting, and planting, land managers create forest openings or plant trees and vegetation to improve habitat for white-tailed deer, ruffed grouse, and waterfowl. The DNR manages state forests to prevent wildfires, and keep our water and air clean.

State forests contain a mix of ownerships within their boundaries. The DNR manages about two-thirds of the land within the St. Croix State Forest. Federal, county, tribal, and private landowners manage the rest.

HISTORY: In the 1800s, logging was the main occupation for the settlers who located in the area. Millions of board feet of pine logs were floated down the St. Croix River to large sawmills in Stillwater.

On July 1, 2011, a severe storm ripped through the St. Croix State Forest and the nearby state park. Winds estimated between 80 and 100 miles per hour uprooted and snapped 97,000 acres of trees in the St. Croix River Valley. DNR land managers harvested downed trees and are working to promote new growth to reestablish a healthy, vigorous forest of pine, hardwoods, and aspen. Conifers were planted to restore existing and establish new pinelands. In the future, habitats will be managed by controlling invasive species, harvesting timber, planting trees, and prescribed burning.

Today, bigtooth and quaking aspen dominate the eastern and southeastern parts of the forest. Interspersed are islands of red oak and northern hardwoods. Some mature pine grow along the Tamarack and St. Croix rivers and their bluffs. High-quality stands of red oak, white oak, maple, basswood, ash, and birch grow in the western and northwestern parts of the forest.

WILDLIFE: Common mammals include white-tailed deer, raccoons, red foxes, porcupines, beavers, and muskrats. More observant trail users may also spot coyotes, timber wolves, weasels, minks, bobcats, or black bears. Nongame birds include northern harriers, red-tailed hawks, sandhill cranes, bald eagles, osprey, and a variety of warblers.

PUT THIS MAP ON YOUR DEVICE
This map is geo-referenced. Download an app such as the free Avenza app on your device and use it to open the PDF of this map. The app will place a blue locator dot on the map wherever you take your device, even if you are out of cellular range.

The information in this map is dynamic and may change over time. The Minnesota DNR is not liable for improper or incorrect use of the data described and/or contained. The data and related graphics are not legal documents, and are protected by copyright.



ST. CROIX STATE FOREST



CAMPING
No reservations required. Fees collected on site. First-come, first-served.

BOULDER CAMPGROUND AND DAY-USE AREA
This campground has 22 secluded, drive-in campsites, one handicap-accessible campsite, picnic tables, drinking water, three vault toilets, and access to Rock Lake for swimming, fishing, and water access.

TAMARACK HORSE CAMPGROUND AND DAY-USE AREA
With 56 campsites designed for horseback riders, this campground also provides manure bunkers and a day-use rider parking lot. Adjacent to more than 20 miles of hilly horse trails and the Matthew Lourey State Trail, there are six vault toilets, drinking water, a picnic shelter, and picnic tables.

NATIONAL PARK SERVICE CAMPSITES
Boaters on the St. Croix River can access primitive shoreline campsites at mile markers 119.3 and 125.5. Vault toilets are nearby—bring toilet paper. No drinking water. The Lower Tamarack Landing is located at mile 119.8. Operated by the National Park Service.
nps.gov/sacn

TRAILS HORSE TRAILS
Twenty miles of horse trails along the Tamarack River and Tamarack Horse Camp offer experienced riders mostly single-track trails, some challenging steep hills, a water crossing over the Tamarack River, and lots of bridges. Minnesota Horse Trail Passes are required.
mndnr.gov/horseback_riding/horsepass

MATTHEW LOUREY STATE TRAIL
Hikers, horseback riders, and mountain bikers can enjoy 80 miles of gravel and natural-surface trail that links with the St. Croix State Park with the St. Croix, Chengwatana, and Nemadji state forests.
mndnr.gov/state_trails/matthew_lourey

ST. CROIX RIVER STATE WATER TRAIL
Beginning in Upper St. Croix Lake in Douglas County, Wisconsin, the St. Croix River flows 164 miles to its confluence with the Mississippi River near Prescott, Wisconsin. Banks are heavily wooded, and several islands appear depending on the water level. The

lower reaches along the St. Croix State Forest contain some rapids. The St. Croix River is also nationally designated as a “National Scenic Riverway.”
mndnr.gov/watertrails

SNOWMOBILE TRAILS
Several miles of scenic, flat and hilly snowmobile trails pass through the St. Croix State Forest, including the Matthew Lourey and Gandy Dancer state trails, which connect to St. Croix State Park and the Nemadji State Forest. Some trails are plowed during the winter for logging activities and others are groomed during the winter. Trails are marked with orange signs.



- Snowmobile trail maps: mndnr.gov/snowmobiling/interactive_map
- Snowmobiles must have current registration.
mndnr.gov/regulations/snowmobile

OFF-HIGHWAY VEHICLE TRAILS
Several miles of all-terrain vehicle (ATV) trails in the St. Croix State Forest wind through aspen, oaks and maples. All trails are marked and range from easy to more difficult. Highway-licensed vehicles may operate on signed forest roads. Forest roads are open to off-highway vehicles (OHVs) unless posted closed. Visit mndnr.gov/ohv for up-to-date rules, maps, and trail and road closures.

GANDY DANCER TRAIL
This 30-mile OHV trail follows an abandoned railroad grade and connects to OHV trails in the Nemadji State Forest and Wisconsin. Visit mndnr.gov/ohv for up-to-date rules, maps, and trail and road closures.

KNOW YOUR VEHICLE
Always make sure you are riding on the appropriate trail, that is designated and signed for your vehicle. OHVs must be registered in Minnesota or have a trail pass.
mndnr.gov/licenses/ohv

CLASSIFICATION: LIMITED
All trail networks on state lands have a classification regarding motor vehicles. The St. Croix State Forest is classified as “limited,” which means OHVs are allowed **only** on signed and mapped routes that are open for a specific OHV use (e.g., ATVs, OHMs, or off-road vehicles).

USING MOTOR VEHICLES WHEN HUNTING AND TRAPPING
The limited classification allows some exceptions for big game hunters and trappers during hunting and trapping seasons. For example, you can use Class 1 ATVs to hunt big game or transport temporary hunting stands between October and December, retrieve big game in September, trap during open season for protected furbearers, and trap for minnows under certain conditions. See the *Minnesota Hunting and Trapping Regulations Handbook*:
mndnr.gov/regulations/hunting

HUNTING
The St. Croix State Forest provides plenty of game for hunting. In the appropriate season, licensed hunters can hunt for deer, grouse, and other game on state forest land and nearby wildlife management areas.
mndnr.gov/hunting

FIREARMS AND BOWS
During open hunting season licensed hunters may carry an uncased and loaded firearm or strung bow to hunt, except in or within 200 feet of any forest recreation area (campgrounds, picnic areas, beaches, parking lots, interpretive sites, and trailheads). Installing permanent deer stands and cutting shooting lanes are not allowed.
mndnr.gov/regulations/hunting

FISHING AND TRAPPING
There are no special provisions or restrictions on fishing or trapping within state forests. You must have the proper license and abide by the same rules and seasons as anywhere else in Minnesota. Visit mndnr.gov/fishing for up-to-date regulations.

RESPECT PRIVATE PROPERTY
The St. Croix State Forest contains private land within its boundaries, so know where you are. Hunting on private land within a state forest and crossing private land to access public land is subject to state trespass laws. Watch for posted “No Trespassing” and “No Hunting” signs and stay off private property.

You must have permission before entering private land, even to cross it to access public land. Trespassing is a misdemeanor. If convicted, you could lose your license to hunt. All conservation and peace officers enforce trespass laws.

WILDLIFE MANAGEMENT AREAS
Wildlife Management Areas (WMAs) provide habitat for deer, bear, small game, forest upland birds, and waterfowl. WMAs are established to protect lands and waters that have high potential for wildlife, public hunting, trapping, and fishing. Hunting and trapping are allowed with the proper license and during the proper season.

McGOWAN WMA
With 123 acres surrounding all of Kenney Lake and most of McGowan Lake, this WMA provides opportunities to hunt waterfowl, along with deer, small game, grouse, and wild turkeys. WMA maps: mndnr.gov/maps/compass.html WMA information: mndnr.gov/wmas

NEARBY RECREATION ST. CROIX STATE PARK
Located just to the south of the St. Croix State Forest, the St. Croix State Park offers trails, canoeing, swimming, fishing, and cabin lodging. Additional park highlights include CCC-constructed buildings, a fire tower, and the Kettle River, which is a State Wild and Scenic River. Minnesota State Parks vehicle permit required.
mndnr.gov/state_parks/st_croix



SCAN TO DOWNLOAD MAP

ALWAYS STAY ON SIGNED TRAILS
Whether you’re riding or walking, tread lightly on the land. Be courteous to others, respect private property, and obey the law.

AREAS WITH LIMITATIONS
These areas are designated to protect unique natural resources and provide other non-motorized recreation opportunities. Motorized vehicles may not operate within “Areas of Limitations” for any reason.

LEAVE TROUBLE BEHIND
Help prevent the spread of invasive plants and animals.

- Clean your gear before entering and leaving the recreation site.
- Remove mud and seeds from clothes, pets, boots, gear, and vehicles.
- Stay on designated trails.
- PlayCleanGo.org



FOR MORE INFORMATION
Minnesota Department of Natural Resources
info.dnr@state.mn.us
651-296-6157
888-646-6367
TDD (Telecommunications Device for the Deaf)
651-296-5484
800-657-3929

EMERGENCY SERVICE - DIAL 911

PINE COUNTY SHERIFF
320-629-8380

NEAREST HOSPITAL SERVICES
Community Memorial Hospital
512 Skyline Boulevard
Cloquet, MN 55720
218-879-4641

The Minnesota DNR prohibits discrimination in its programs and services based on race, color, creed, religion, national origin, sex, public assistance status, age, sexual orientation or disability. Persons with disabilities may request reasonable modifications to access or participate in DNR programs and services by contacting the DNR ADA Title II Coordinator at info.dnr@state.mn.us or 651-296-6157. Discrimination inquiries should be sent to Minnesota DNR, 500 Lafayette Road, St. Paul, MN 55155-4049; or Office of Civil Rights, U.S. Department of the Interior, 1849 C. Street NW, Washington, D.C. 20240.

© 2017, State of Minnesota, Department of Natural Resources

Printed on Minnesota made paper containing a minimum of 10 percent post-consumer waste.

FORESTRY
500 Lafayette Road, St. Paul, MN 55155
888-646-6367
mndnr.gov

