

PINE MARTEN RUN

Pine Marten Run is a 20 mile system of hiking and horseback riding trails located in the Ironjaw Semiprimitive Area approximately 30 miles northwest of Manistique in Schoolcraft County, Michigan.

With 3 trailheads located on County Road 440, CR 437 and Forest Road 2258, Pine Marten Run is composed of five loop trails with inter-connecting spurs. The trails pass through a wide variety of vegetative communities as they meander past lakes and streams, gently rolling hills, bogs and wildlife openings.

Parking areas suitable for vehicles with horse trailers are available at each trailhead. Water and toilet facilities are available at the CR 440 trailhead, while the others only have toilet facilities. Adirondack shelters with fire rings have been constructed at Rim Lake, Rumble Lake and along the Indian River.

Camping is allowed without permit at the trailheads for up to 16 days, and manure should be scattered in the woods before leaving. Permits are required for camping on Swan Lake, Triangle Lake and Ironjaw Lake and removal of all manure is required. Permits may be obtained at District offices in Manistique or Rapid River.

TRAIL LOOPS

Rumble Loop – 3.3 miles long with access from FR 2258 just south of the Indian River bridge. This segment crosses through the Mike White Sharptail Grouse Management Area as it traverses rolling hills of beech, birch and maple and loops around Dinner and Sprinkler Lake. Approximately one mile of this loop is open to motorized vehicles so users should exercise caution.

Swan Loop – 1.5 miles long with access from FR 2258 just north of the intersection with County

road 440. This segment circles Swan Lake which is a popular camping lake. The terrain in this area is fairly level and is composed of pine plantations interspersed with hardwoods and hemlocks.

Ironjaw Loop - 4.1 miles long and located in the center of the Ironjaw Area. This segment can be accessed from all the other loops except Triangle Lake. It can also be reached via FR 2733, which is the access road to the permit campsite on Ironjaw Lake. This loop provides scenic vistas of Verdant and Ironjaw Lakes.

Hardwood Loop – This loop is 5.5 miles long and can be accessed just north of CR 440 where it intersects with FR 2728. Traversing the central portion of the Ironjaw Semi-Primitive Area, it circles Spud Lake at the north end. This loop presents a wide variety of vegetative types, topography, plant communities and wildlife viewing opportunities.

Triangle Loop – 5.8 miles long with access from CR437 just south of the Indian River bridge. This segment of trail was relocated in 2006.

For More Information Contact:

Rapid River/Manistique Ranger District
499 East Lake Shore Drive
Manistique, MI 49854
(906) 341-5666

<http://www.fs.fed.us/r9/forests/hiawatha>

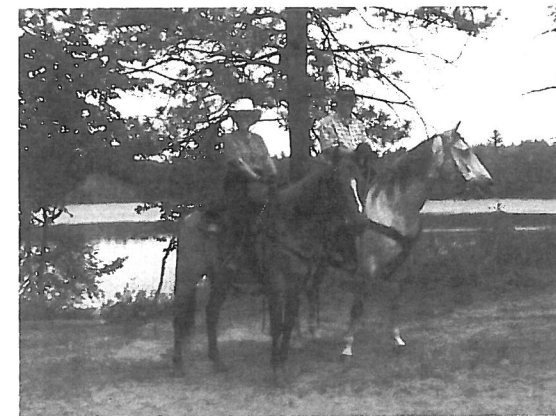
The U.S. Department of Agriculture (USDA) prohibits discrimination in all its programs and activities on the basis of race, color, national origin, sex, religion, age, disability, political beliefs, sexual orientation, and marital or family status. (Not all prohibited bases apply to all programs.) Persons with disabilities who require alternative means for communication of program information (Braille, large print, audiotope, etc.) should contact USDA's TARGET Center at (202) 720-2600 (voice and TDD). To file a complaint of discrimination, write USDA, Director, Office of Civil Rights, Room 326-W, Whitten Building, 1400 Independence Avenue, SW, Washington, DC 20250-9410 or call (202) 720-5964 (voice and TDD). USDA is an equal opportunity provider and employer.

4/2010



**Hiawatha
National
Forest**

Pine Marten Run Horseback Riding and Hiking Trail



**Rapid River/Manistique
Ranger District**



- Reservable Campsite
- Adirondack Shelter
- Parking/Trailhead
- Drinking Water
- Toilet
- Trail Map
- Trail Loop
- Paved or Gravel Two-Lane Road
- Two-Track/Woods Road

Indicates "You Are Here"

Pine Marten Run

Equestrian and Hiking Trails



Note: All trails are two-way. This is a non-motorized trail system. ORVs are prohibited.

