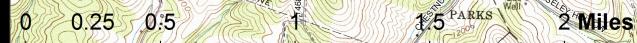
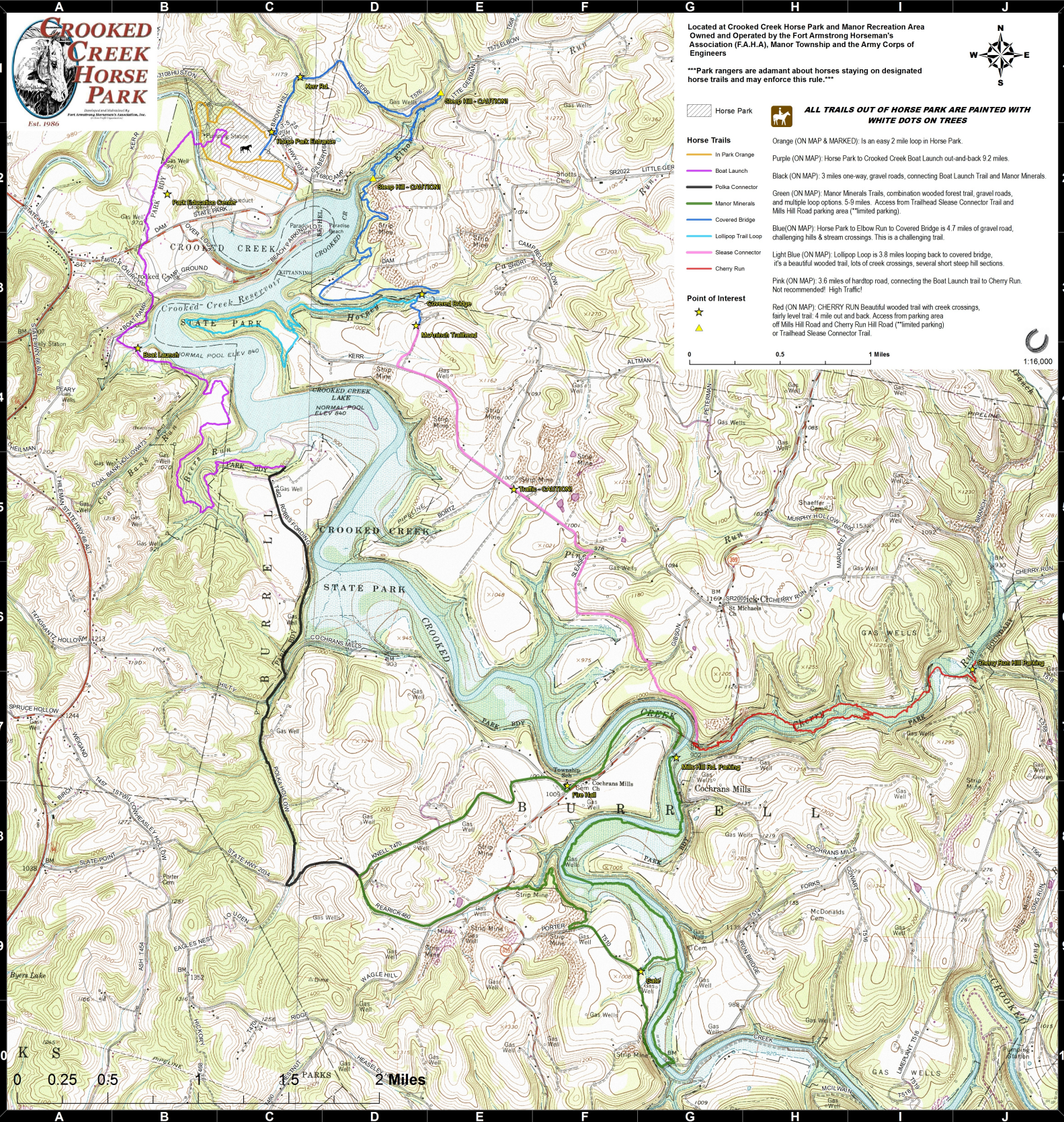
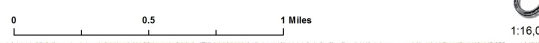


Located at Crooked Creek Horse Park and Manor Recreation Area
 Owned and Operated by the Fort Armstrong Horseman's
 Association (F.A.H.A.), Manor Township and the Army Corps of
 Engineers



***Park rangers are adamant about horses staying on designated
 horse trails and may enforce this rule.***

- Horse Park
- ALL TRAILS OUT OF HORSE PARK ARE PAINTED WITH WHITE DOTS ON TREES**
- Horse Trails**
 - Orange (ON MAP & MARKED): Is an easy 2 mile loop in Horse Park.
 - Purple (ON MAP): Horse Park to Crooked Creek Boat Launch out-and-back 9.2 miles.
 - Black (ON MAP): 3 miles one-way, gravel roads, connecting Boat Launch Trail and Manor Minerals.
 - Green (ON MAP): Manor Minerals Trails, combination wooded forest trail, gravel roads, and multiple loop options. 5-9 miles. Access from Trailhead Slease Connector Trail and Mills Hill Road parking area ("limited parking").
 - Blue (ON MAP): Horse Park to Elbow Run to Covered Bridge is 4.7 miles of gravel road, challenging hills & stream crossings. This is a challenging trail.
 - Lollipop Trail Loop
 - Light Blue (ON MAP): Lollipop Loop is 3.8 miles looping back to covered bridge, it's a beautiful wooded trail, lots of creek crossings, several short steep hill sections.
 - Pink (ON MAP): 3.6 miles of hardtop road, connecting the Boat Launch trail to Cherry Run. Not recommended! High Traffic!
 - Red (ON MAP): CHERRY RUN Beautiful wooded trail with creek crossings, fairly level trail, 4 mile out and back. Access from parking area off Mills Hill Road and Cherry Run Hill Road ("limited parking") or Trailhead Slease Connector Trail.
- Point of Interest**
 - ★ (Yellow star): CHERRY RUN Beautiful wooded trail with creek crossings, fairly level trail, 4 mile out and back. Access from parking area off Mills Hill Road and Cherry Run Hill Road ("limited parking") or Trailhead Slease Connector Trail.
 - ▲ (Yellow triangle): CHERRY RUN Beautiful wooded trail with creek crossings, fairly level trail, 4 mile out and back. Access from parking area off Mills Hill Road and Cherry Run Hill Road ("limited parking") or Trailhead Slease Connector Trail.



L. J. ...