

Recreation and Trails Map

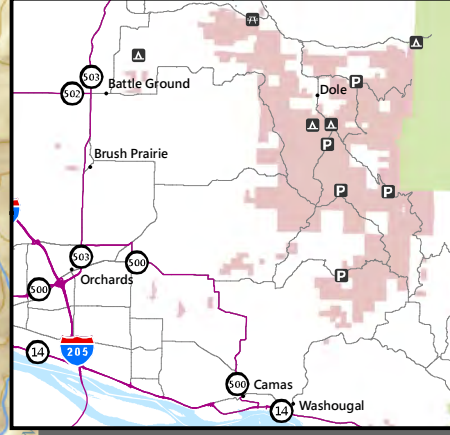
Discover Pass required for vehicles



discoverpass.wa.gov

Yacolt Burn State Forest Non-Motorized Trails

Note to Map Users: Extreme care was used during the compilation of this map to ensure accuracy. However, due to changes in ownership and the need to rely on outside information, the Department of Natural Resources cannot accept responsibility for errors or omissions. Therefore, there are no warranties to accompany this material.

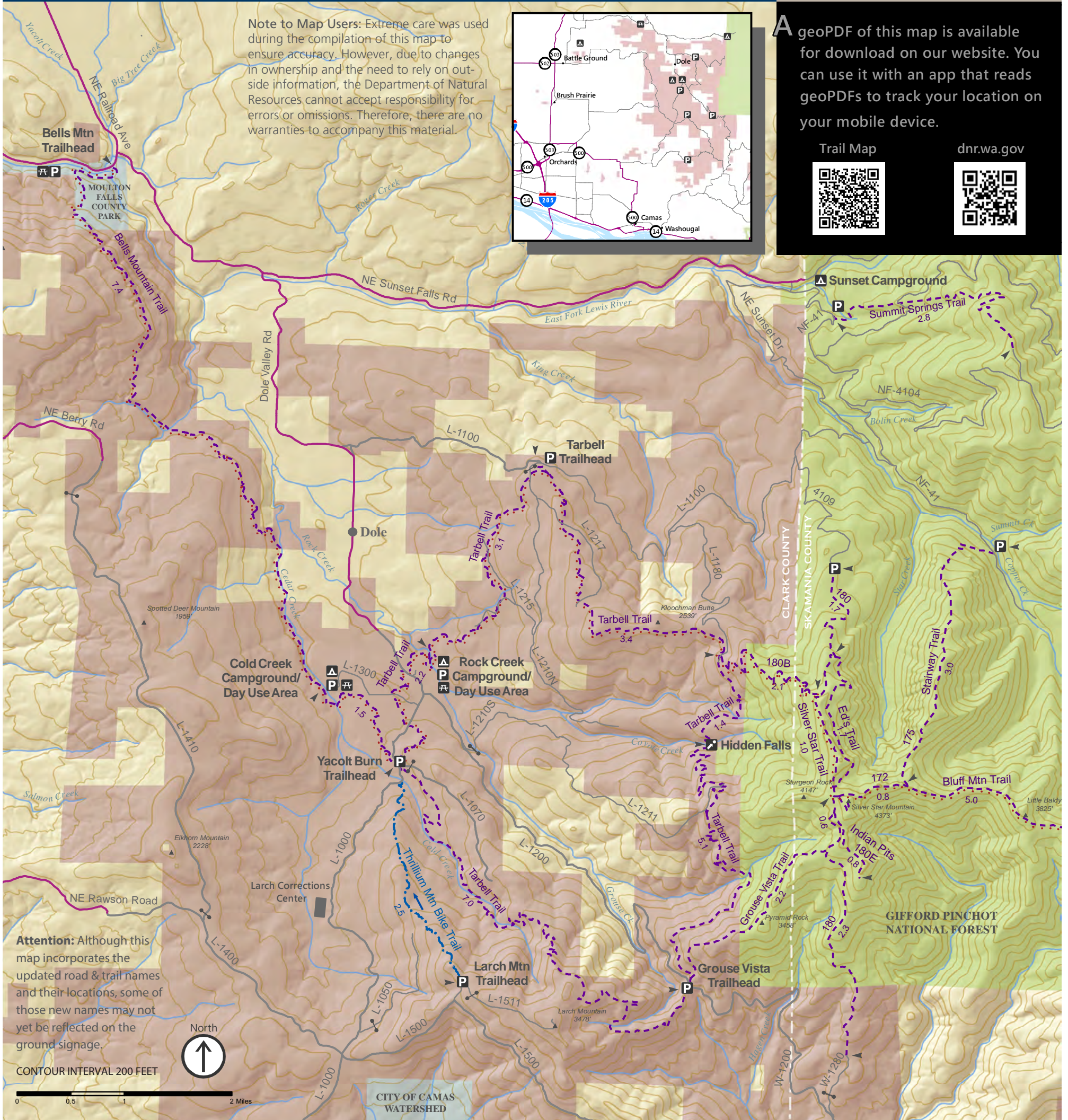


A geoPDF of this map is available for download on our website. You can use it with an app that reads geoPDFs to track your location on your mobile device.

Trail Map



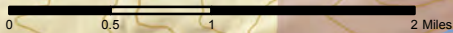
dnr.wa.gov



Attention: Although this map incorporates the updated road & trail names and their locations, some of those new names may not yet be reflected on the ground signage.



CONTOUR INTERVAL 200 FEET



Please stay on designated trails. If a trail is not posted with DNR signs, and does not appear on DNR maps, it is not approved for public use.

- Trailhead Parking
- Campground
- Day Use Area
- Point of Interest
- DNR Trust Lands
- US Forest Service
- County or Municipal Lands
- County Boundary
- Hike / Mtn Bike / Horse
- Mountain Bike Only
- Chinook Trail Route
- State or County Road
- Primary Forest Road
- Secondary Forest Road
- Gate
- Trail Mileage

To report illegal activities, call toll free 1-855-883-8368, forestwatch@dnr.wa.gov



For current trail conditions, scan here



Know the rules - scan here to learn more

WARNING: Gates shown on the map are normally closed. Other gates, not shown on the map, are normally open. However, they may be closed at any time to facilitate specific work projects.



NATURAL RESOURCES

www.dnr.wa.gov/recreation