



# Charles H. Bronson State Forest

10,945 Acres



## Legend

- Trailhead
- Florida National Scenic Trail
- Connector Trail
- White Trail 15 M.
- Equestrian Trail 23.7 M.
- Yellow Trail 2.6 M.
- Forest Road
- Stream
- Culpepper Bend Day Use Pavilion
- Gate Please leave gates as you find them open, or closed.
- Bridge

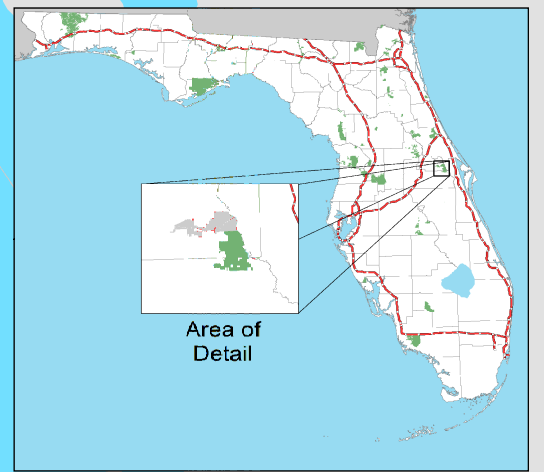
0 0.25 0.5 Miles

Map Date: 12/2013, sd

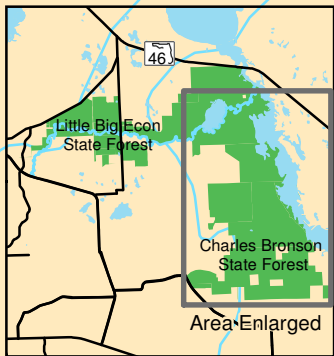
For additional information on Charles Bronson State Forest please contact:

Little Big Econ State Forest  
1350 Snowhill Road, Geneva, FL 32732  
Phone: (407) 971-3500  
www.fl-dof.com

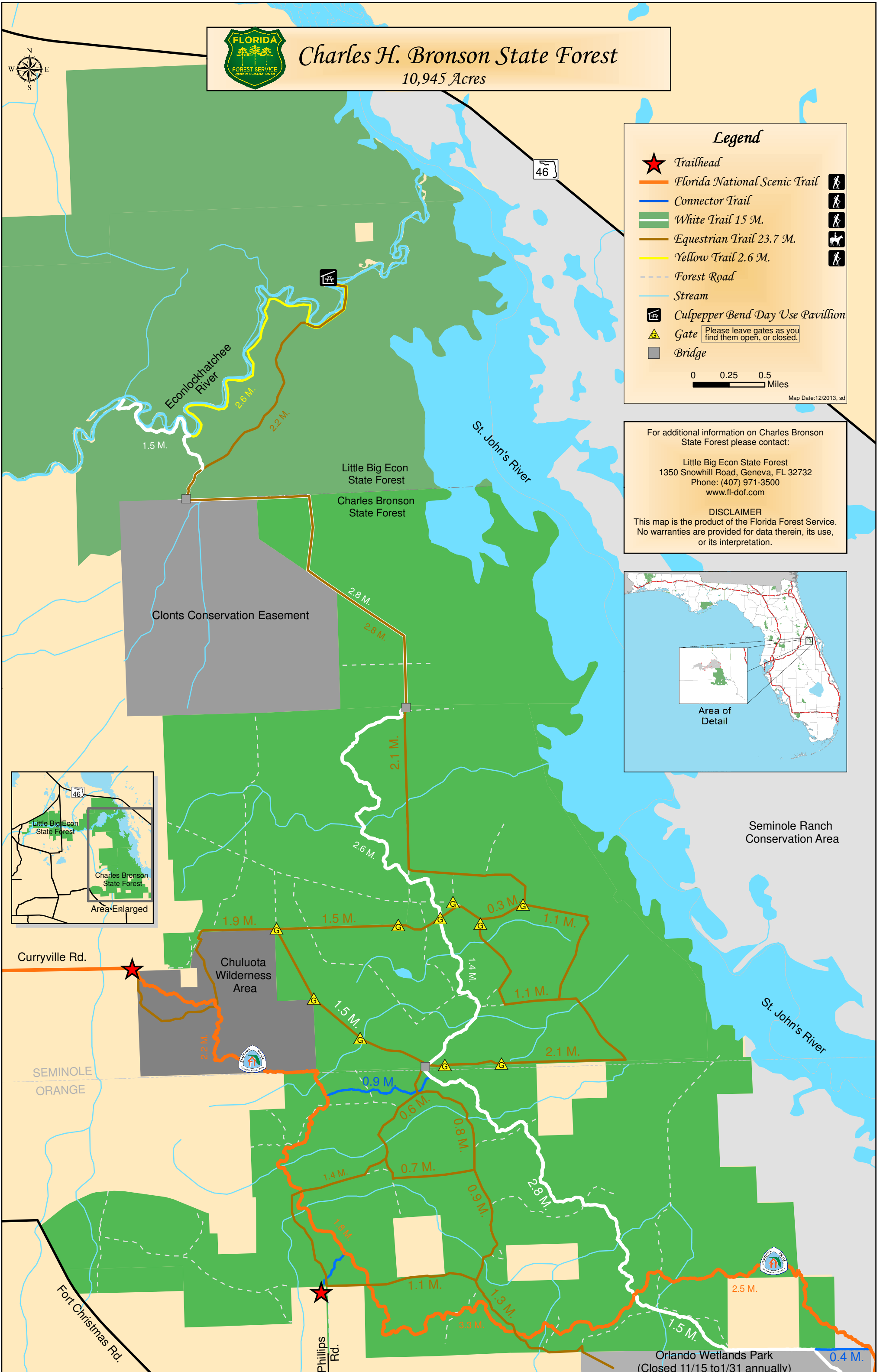
**DISCLAIMER**  
This map is the product of the Florida Forest Service. No warranties are provided for data therein, its use, or its interpretation.



Area of Detail



Area Enlarged



Seminole Ranch Conservation Area

St. John's River

Orlando Wetlands Park  
(Closed 11/15 to 1/31 annually)

SEMINOLE  
ORANGE

Curryville Rd.

Chuluota  
Wilderness  
Area

Phillips  
Rd.

Fort Christmas Rd.

46