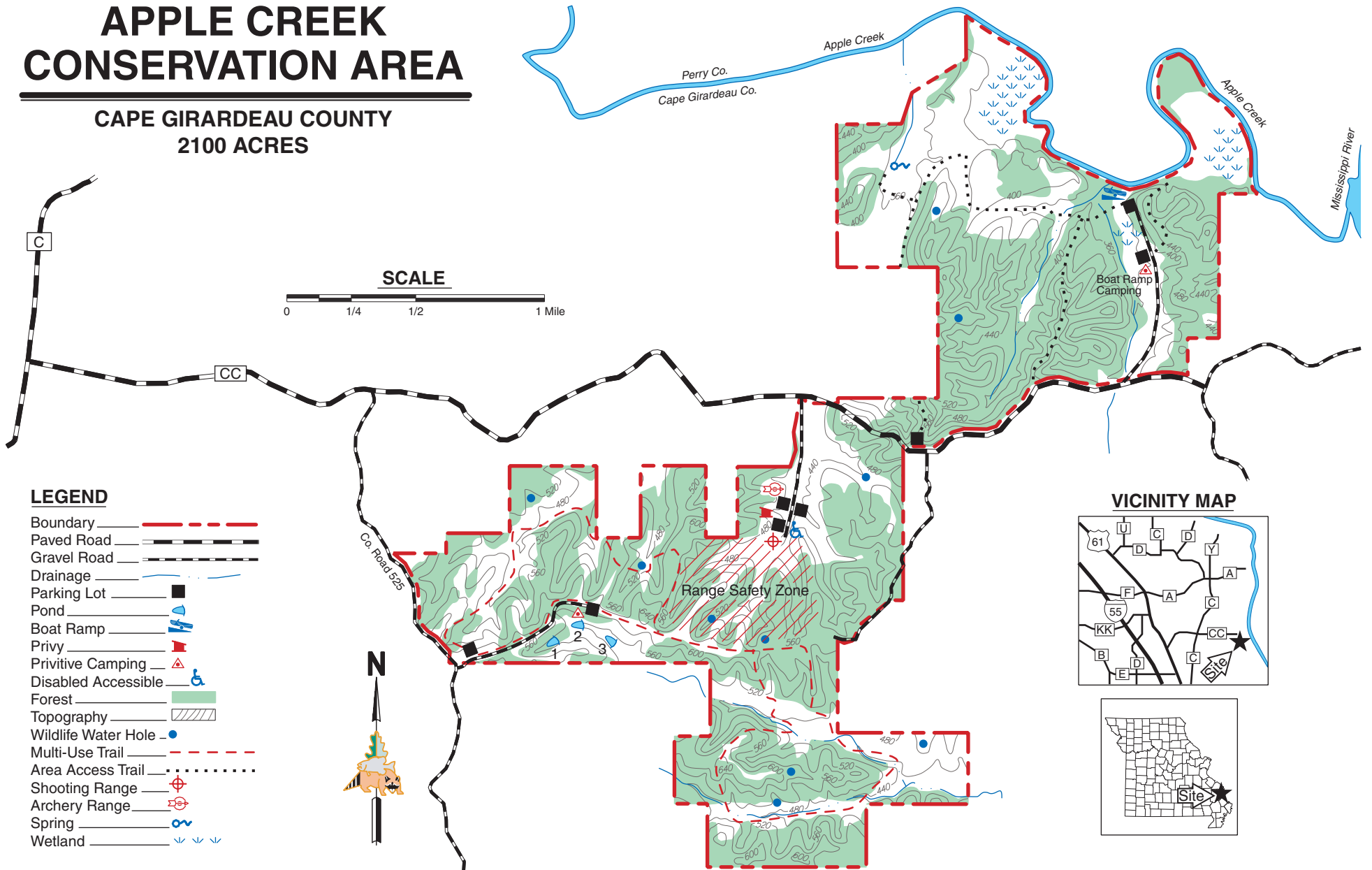


# APPLE CREEK CONSERVATION AREA

CAPE GIRARDEAU COUNTY  
2100 ACRES



## LEGEND

- Boundary ————
- Paved Road ————
- Gravel Road ————
- Drainage ————
- Parking Lot —■
- Pond ————
- Boat Ramp ————
- Privy ————
- Primitive Camping —▲
- Disabled Accessible —♿
- Forest ————
- Topography ————
- Wildlife Water Hole —●
- Multi-Use Trail ————
- Area Access Trail ————
- Shooting Range ————
- Archery Range ————
- Spring ————
- Wetland ————

## VICINITY MAP

