



Woodbury County Conservation Dept.

4500 Sioux River Road, Sioux City, Iowa 51109
Phone: 712-258-0838
www.woodburyparks.com



Area Information

Acres: 623

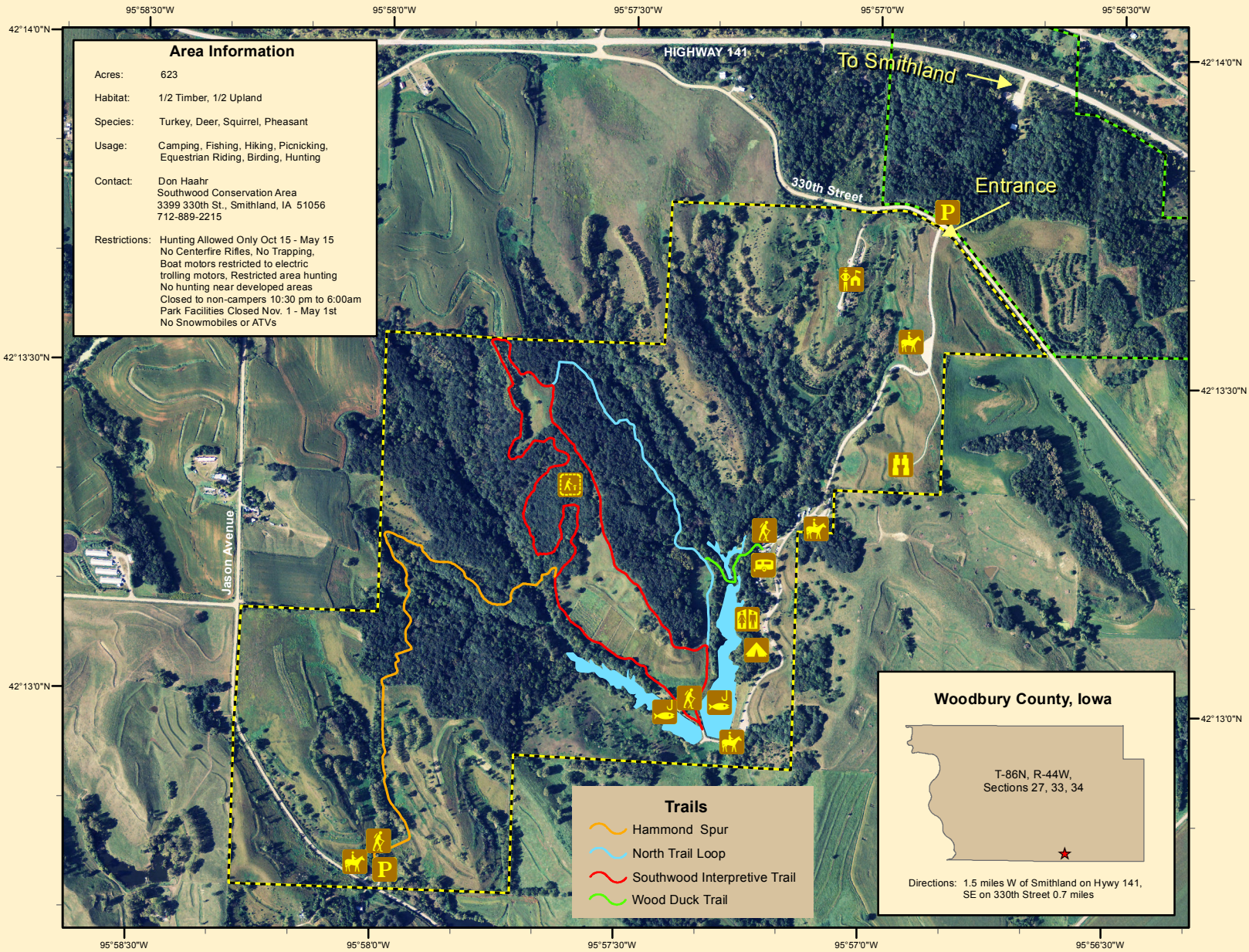
Habitat: 1/2 Timber, 1/2 Upland

Species: Turkey, Deer, Squirrel, Pheasant

Usage: Camping, Fishing, Hiking, Picnicking, Equestrian Riding, Birding, Hunting

Contact: Don Haahr
Southwood Conservation Area
3399 330th St., Smithland, IA 51056
712-889-2215

Restrictions: Hunting Allowed Only Oct 15 - May 15
No Centerfire Rifles, No Trapping,
Boat motors restricted to electric
trolling motors, Restricted area hunting
No hunting near developed areas
Closed to non-campers 10:30 pm to 6:00am
Park Facilities Closed Nov. 1 - May 1st
No Snowmobiles or ATVs



Trails

- Hammond Spur (orange line)
- North Trail Loop (blue line)
- Southwood Interpretive Trail (red line)
- Wood Duck Trail (green line)

Woodbury County, Iowa

T-86N, R-44W,
Sections 27, 33, 34

Directions: 1.5 miles W of Smithland on Hwy 141,
SE on 330th Street 0.7 miles

Legend

Fowler Forest Preserve	Hiking	Ranger Station	Parking	Primitive Camping	Modern Camping
Southwood Conservation Area	Equestrian	Restrooms	Overlook	Fishing	Interpretive Trail

Southwood Conservation Area

0 0.1 0.2 0.3 0.4 0.5 Miles

Aerial Photo - Summer, 2010
Map Creation Date: 1/2011

Disclaimer: Information and boundaries depicted on this map have been carefully reviewed. However, this data is not guaranteed to be free of errors or inaccuracies as provided by Woodbury County or other providers and sources of data contained in this map. Boundary signs have been placed on our areas to ensure users do not trespass on private property.