

Grant Creek Horseback Riding Trail System

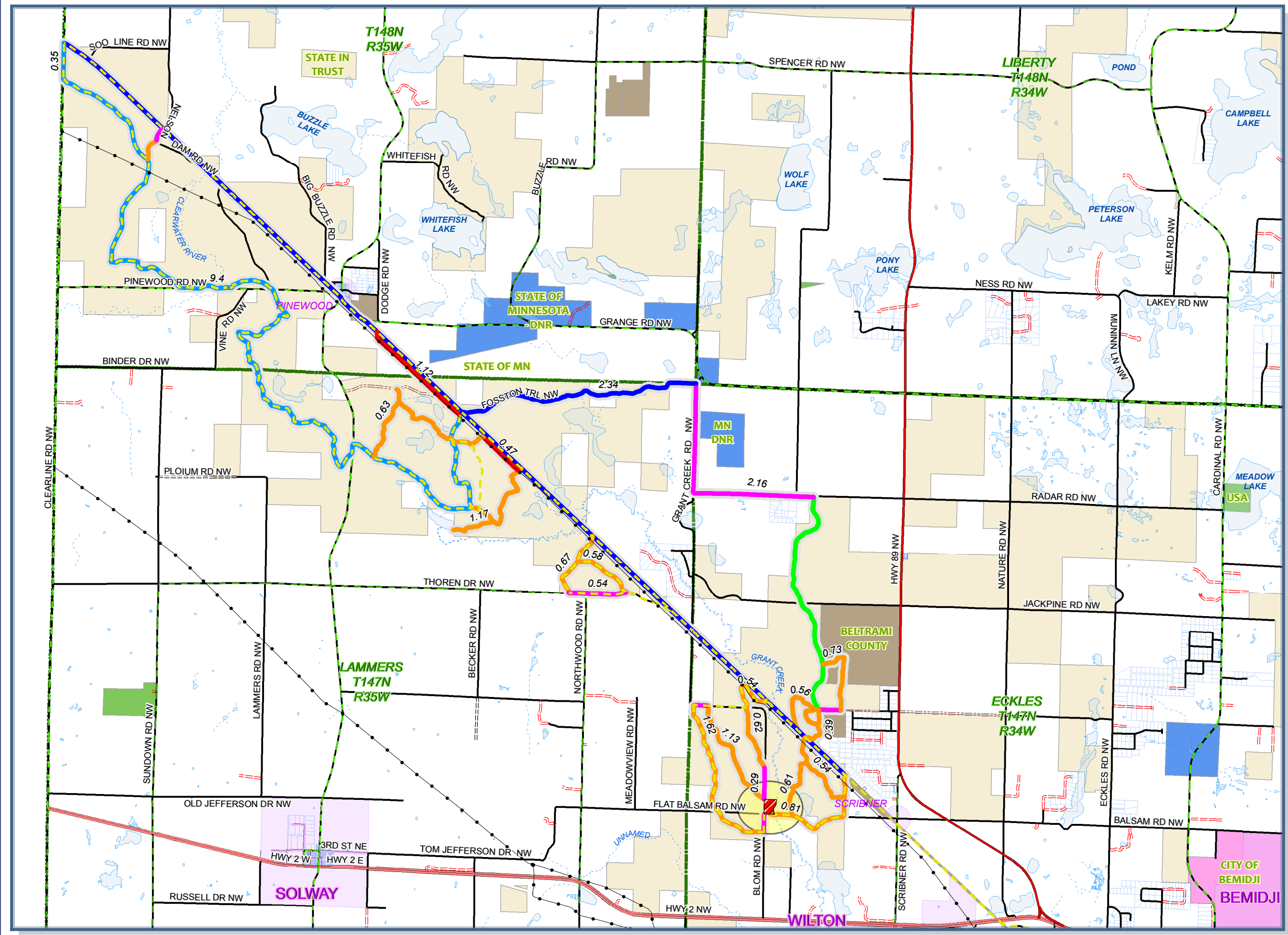


Natural Resource Management
Department
(218) 333-4165
www.co.beltrami.mn.us



Legend

- Pipe Lines
- Grant Creek Horse Camp
- Soo Line Trail ~ 33.38 Miles
- Deb's Trail ~ 2.27 Miles
- Pinewood Trail ~ 9.75 Miles
- Fosston Trail ~ 2.34 Miles
- Soo Line Grade ~ 10.08 Miles
- Pipe Line ~ 1.59 Miles
- County Forest Road ~ 13.19 Miles
- Maintained Roads ~ 3.63 Miles
- Lakes
- Township
- Village
- Municipal
- Govt Land
- City
- County
- County Managed
- DNR
- Federal



1:55,000

Mapped By: Shawn Morgan, July 15, 2013