

The Gilbertson Conservation Education Area (GCEA) is a 345-acre park located along the banks of the Turkey River on the east side of Elgin. This beautiful area is lined with streams and bottomlands surrounded by the palisade limestone bluffs for which northeast Iowa is so famous.

The late Millard Gilbertson of Elgin donated the original 327 acre area to the Fayette County Conservation Board in 1986.

This unique area offers something for everyone with a canoe access, paved 1/4-mile trail that is wheelchair accessible, a playground, a shelter house, a modern campground with a dump station, water fill up sites, sinks, showers, flush toilets, and 28 electrical hook-up sites. There are over five miles of trails for hiking, non-motorized bikes, horseback riding, and cross-country skiing.

A popular attraction is the petting zoo with many different types of domesticated animals and farm animals. Also, the Gilbertson Nature Center features interpretive and educational displays about northeast Iowa. Farm and home antiques and memorabilia can be found in the Mavis and Conner Dummermuth Historical Building, while the Hart Dummermuth Historical House depicts a typical farm home during the 1890 - 1920's.

Part of the park are also open for public hunting.

National Park Service Passport Cancellation Stamp!

The GCEA will be a place where you can collect a National Park Service (NPS) Passport Cancellation Stamp. The GCEA joins other Silos & Smokestacks National Heritage Areas (SSNHA) partner sites that will now have a NPS Passport Cancellation Stamp available.

Gilbertson Conservation Education Area Web Page:

<http://www.elginiowa.org/GILBERTSON.html>

Fayette County Conservation Board's Main Web Page:

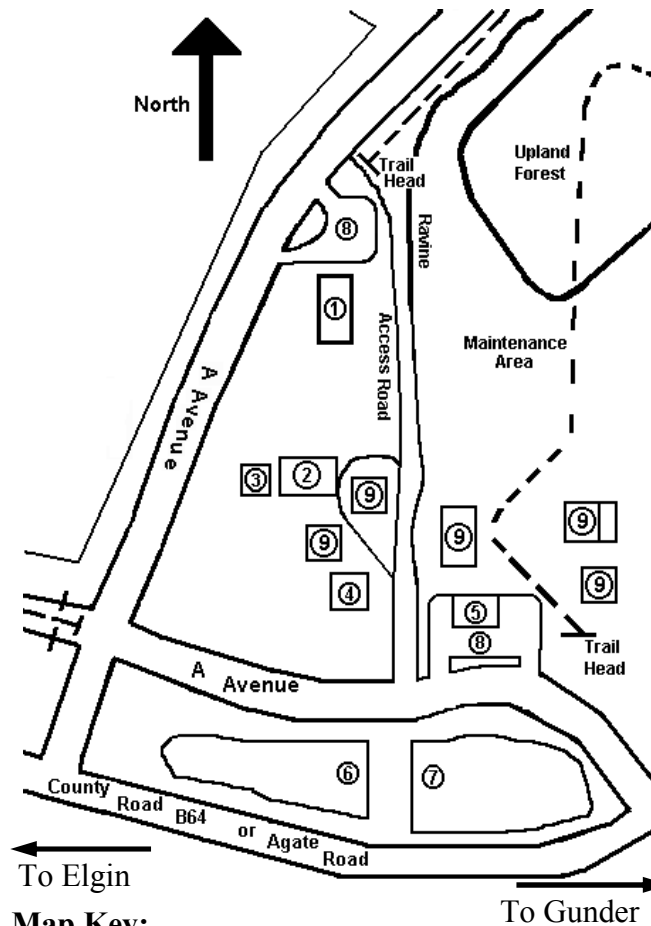
<http://fayettecountyiowa.org/CONSERVATION.html>

Fayette Count Conservation Board Blogspot:

<http://fayettecountyconservationboard.blogspot.com/>

Gilbertson Conservation Education Area	Wildwood Nature Center
22580 A Avenue	18673 Lane Road
Elgin, IA 52141	Fayette, IA 52142
563-426-5740	563-422-5146
gnfcpcb@alpinecom.net	563-425-3613
	fayetteccb@trxinc.com

East End Gilbertson Conservation Education Area



Map Key:

1. Gilbertson Nature Center
2. Mavis and Conner Dummermuth Historical Building
3. Hart Dummermuth Historical House
4. Park Ranger's Residence
5. Petting Zoo
6. Wetland
7. Pond
8. Parking Lot
9. Maintenance Buildings = DO NOT ENTER

Gilbertson Conservation Education Area



*A park
for all
seasons*

*A part of the
Fayette County
Conservation Board*

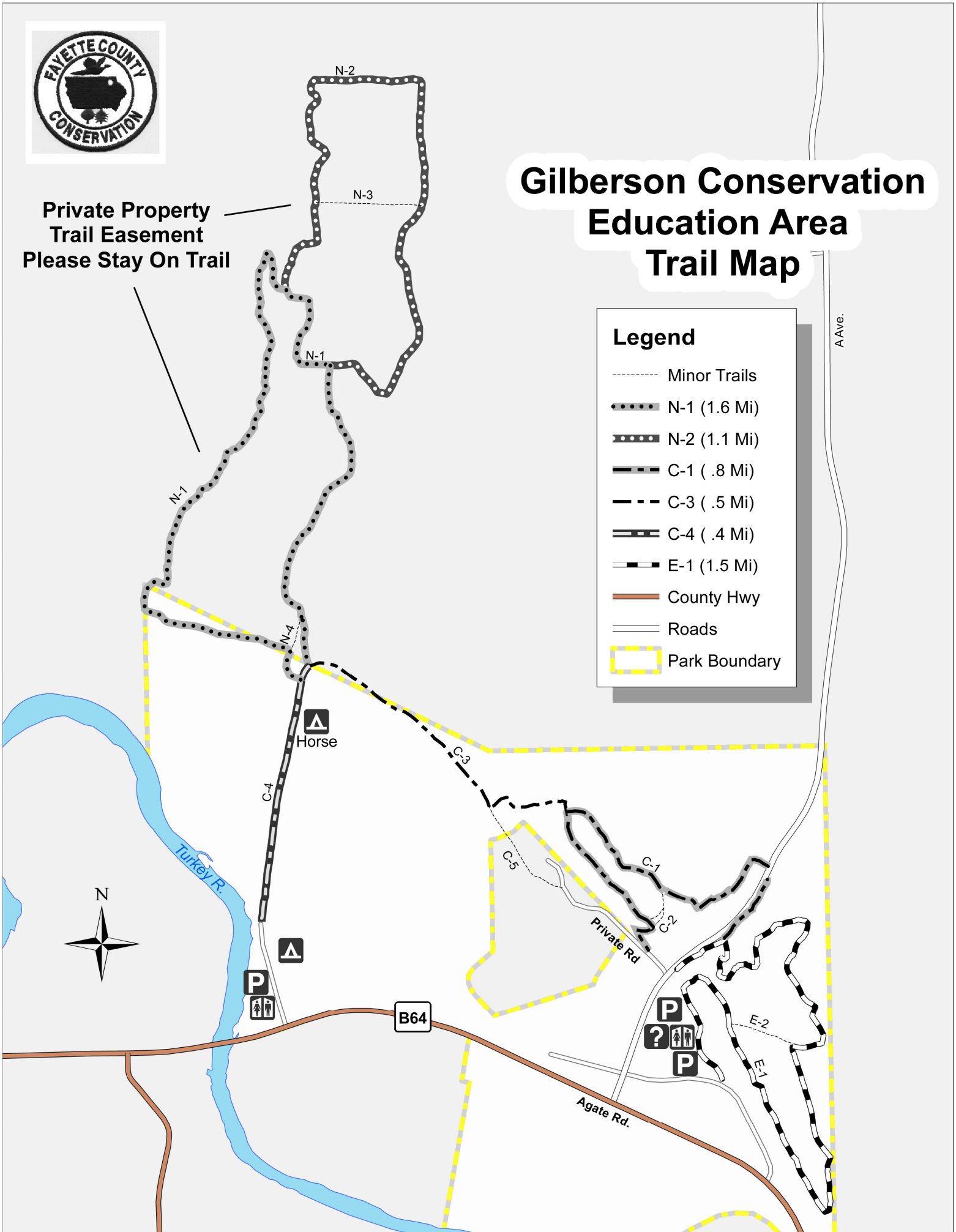


Private Property
Trail Easement
Please Stay On Trail

Gilberson Conservation Education Area Trail Map

Legend

- Minor Trails
- N-1 (1.6 Mi)
- N-2 (1.1 Mi)
- — — C-1 (.8 Mi)
- - - C-3 (.5 Mi)
- — — C-4 (.4 Mi)
- - - E-1 (1.5 Mi)
- County Hwy
- Roads
- ▭ Park Boundary



A Ave.

N-1

N-2

N-3

N-1

N-1

Horse

Turkey R.

N

B64

Private Rd

Agate Rd.

C-5

C-1

C-2

P

?

P

E-2

E-1

P

?

P