



Horseback Riding

Recreational Riding

Horseback riding has long been a popular way to access and experience Joshua Tree National Park. Two hundred fifty-three miles of equestrian trails and trail corridors traverse open lands, canyon bottoms, and dry washes throughout the park.

Desert ecosystems are fragile and require special care. Desert soils, when disturbed, take years to heal, so it is important for riders to travel on established trails.

The lack of available drinking water is both a challenge and a limitation for riders and horses. Care should be taken when planning your trip since stock animals may not use natural or man-made water sources within the park.



Camping and Backcountry Use

Ryan and Black Rock campgrounds have designated staging and camping areas for horses and other stock animals. Reservations are not required for day use.

Reservations may be made for camping at Black Rock horse camp by calling 1-877-444-6777. A \$20 per night fee is charged.

Call 760-367-5545, Monday through Friday, 8 a.m. to 4 p.m. for reservations to camp at Ryan horse camp. Water is not available at Ryan and the camping fee is \$15 per night.

Grazing is not permitted in the park and stock animals are restricted to pellet feed. Manure must be removed from campgrounds and trailheads.

Large fires, fueled in part by exotic grasses and weeds, have recently destroyed portions of the park's watersheds. Please do your part to discourage the introduction of non-native grasses and weeds.

Travel Restrictions

Park staff are in the process of stabilizing and rehabilitating the trails and installing improved signage. New trails are being constructed. In areas where trail construction has been completed, riders must stay on established trails.

In areas where trail construction has not yet occurred, riders should follow the existing footprints of trails defined in the BWMP and avoid trails that have not been designated.

Desert soils and vegetation are easily eroded. Most park trails are designed for single file travel. Travel abreast only in trail corridors. Be aware of riders traveling in the opposite direction and locate areas where you can pass safely.

Riders are not permitted to tether or rest their animals within 200 feet of any natural or man-made water source.

Access and Staging

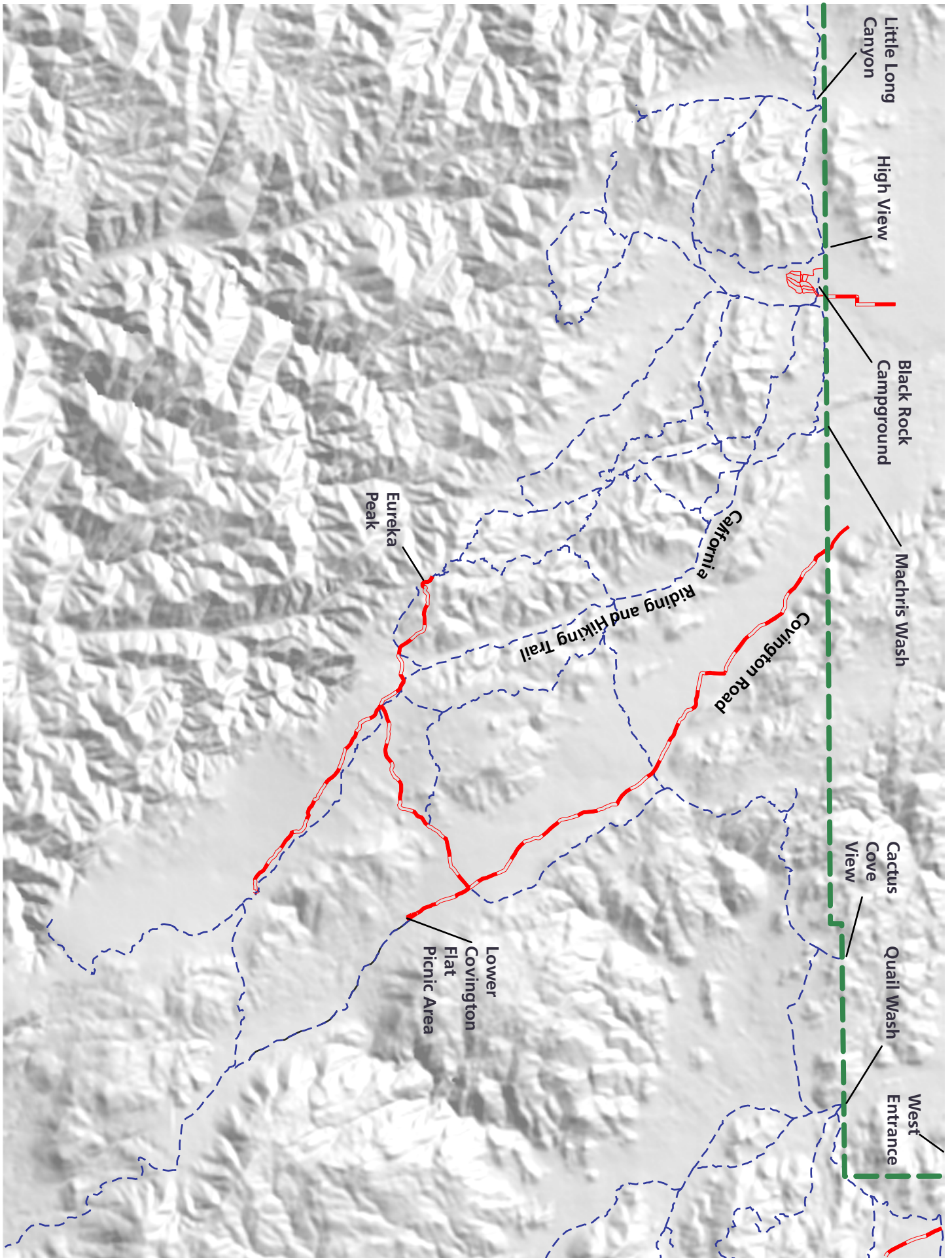
Joshua Tree is a fee-designated park. An entrance fee of \$20 per vehicle or \$10 per person is charged and is good for seven consecutive days. A Joshua Tree annual pass is available for \$30 and the Federal Lands, Senior, and Access passes are also honored.




In addition to the west entrance station, horse riders in the west entrance vicinity, may enter the park at Quail Wash, Cactus Cove View, and Burro Access.

In the Black Rock Canyon area, riders may enter at the Hi-View Nature Trail, Machris Wash, Long Canyon, and Little Long Canyon.

Staging for horses is available at the Boy Scout trailhead in Indian Cove, the west entrance borrow pit, Lower Covington Flats picnic area, Twin Tanks, Geology Tour Road, north entrance, as well as Black Rock and Ryan horse camps. Trailers may also be parked in other areas as long as they do not obstruct traffic.

Black Rock Canyon Horse Trails



- LEGEND**
-  Park Boundary
 -  Roads
 -  Horse Trails

0 0.5 1 1.5 Miles

