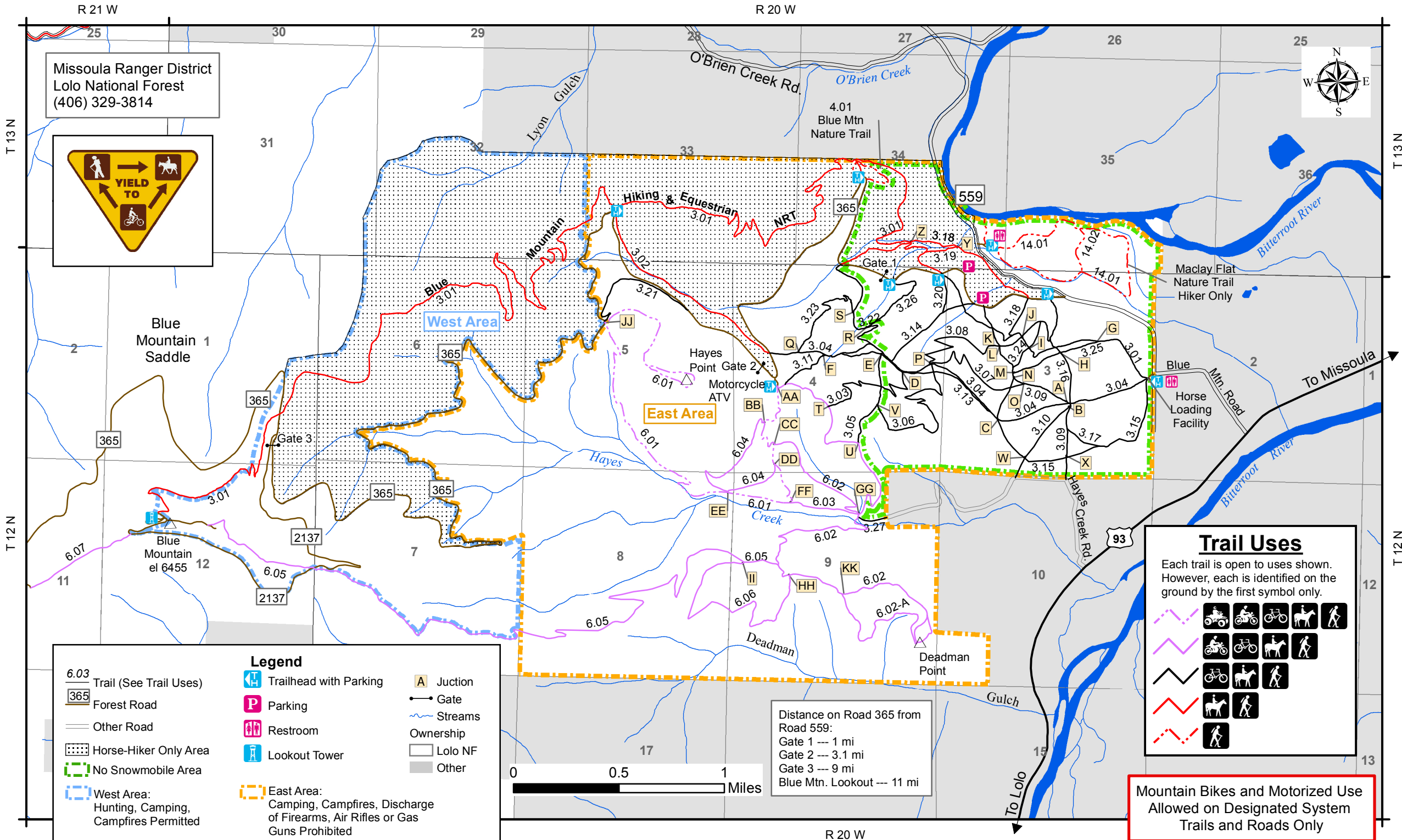
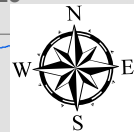
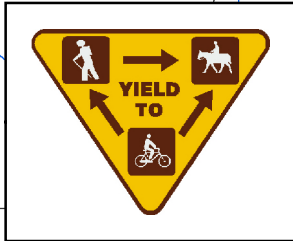
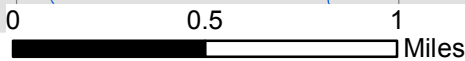


Missoula Ranger District  
Lolo National Forest  
(406) 329-3814



6.03	Trail (See Trail Uses)		Trailhead with Parking		Junction
	Forest Road		Parking		Gate
	Other Road		Restroom		Streams
	Horse-Hiker Only Area		Lookout Tower		Ownership
	No Snowmobile Area				Lolo NF
	West Area: Hunting, Camping, Campfires Permitted		East Area: Camping, Campfires, Discharge of Firearms, Air Rifles or Gas Guns Prohibited		Other

Distance on Road 365 from  
Road 559:  
Gate 1 --- 1 mi  
Gate 2 --- 3.1 mi  
Gate 3 --- 9 mi  
Blue Mtn. Lookout --- 11 mi



### Trail Uses

Each trail is open to uses shown. However, each is identified on the ground by the first symbol only.

	Motorcycle, Bicycle, Horse, Hiker
	Motorcycle, Bicycle, Horse, Hiker
	Bicycle, Horse, Hiker
	Horse, Hiker
	Hiker

**Mountain Bikes and Motorized Use  
Allowed on Designated System  
Trails and Roads Only**