



Shirley Creek Trail

Hoosier National Forest



FS-R9-015 - 3/2015

Description

Length: 19.4 miles

Type: Hiking, horse riding, and mountain biking.

Special Features: Shady trails. Scenic hardwood forest, a variety of terrain.

Etiquette and Rules

Horse and mountain biker riders (age 17 years and older) are required to have a permit and stay on the trail. Permits are available from our offices and local vendors.

Observe the following trail courtesy:

- Mountain bikers yield to horse riders and hikers. Make your approach known in advance.
- Hikers yield to horse riders.
- Horse riders control your horse.
- Pack out your trash.

Motorized travel is not permitted.

Safety

Use caution during hunting seasons. Blaze orange clothing is recommended during deer season (do not wear white).

If a parking lot is not available where you wish access, be sure your vehicle is well off the road. Many trails intersect roadways. If you choose to use a road as part of your trip, be careful of traffic.

Ticks and chiggers are common. Take necessary precautions and avoid tall grass and brush.

Loose limbs and hazard trees can fall on the trail at anytime, especially on windy days.

Map may contain errors, no guarantee is made to its accuracy.

Emergencies

- Nearest public phone is located in Orleans, IN.
- The nearest hospital is located in Paoli, IN.
- Orange County Sheriff: 812-723-2417 or 911.
- Indiana Conservation Officers: 812-837-9536.

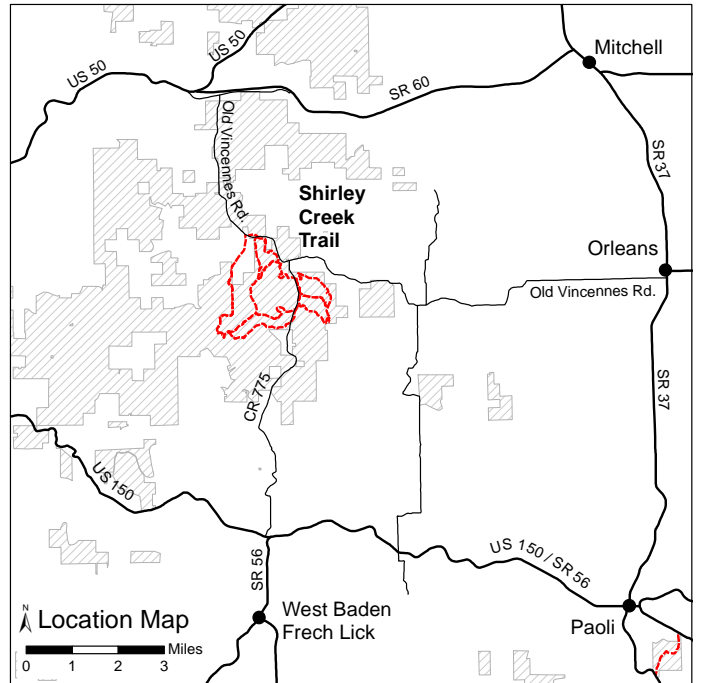
Facilities

A primitive campground with accesible pit toilets, hitching racks, and water for livestock is available.

The campground is designed for horse camping, however, anyone



Forest Service



is welcome to camp. There is no fee to use the area. Check the bulletin board for rules and regulations.

Day use parking is available at the campground.

Directions

From Bedford, take US Highway 50 west 9.6 miles to the intersection of Highways 50 and 60. Turn on Highway 60 east. Continue 1.3 miles to the first road on the right. Turn right on the county road and immediately cross some railroad tracks. Follow the paved road for 0.9 miles. Turn left on CR 825 and immediately cross a bridge. Drive 3.4 miles to the split in the road. Take the left split (CR 810 north) and pass Bonds Chapel and a cemetery on the right. Drive 1.3 miles to CR 775 which is in the small community of Hindostan. Turn right on CR 775 and drive 1.2 miles to the Shirley Creek Trailhead sign on the left. Follow the road to the trailhead and campground.

GPS Coordinates for the Shirley Creek Horse Camp: 38°38'58.147"N, 86°35'51.174"W

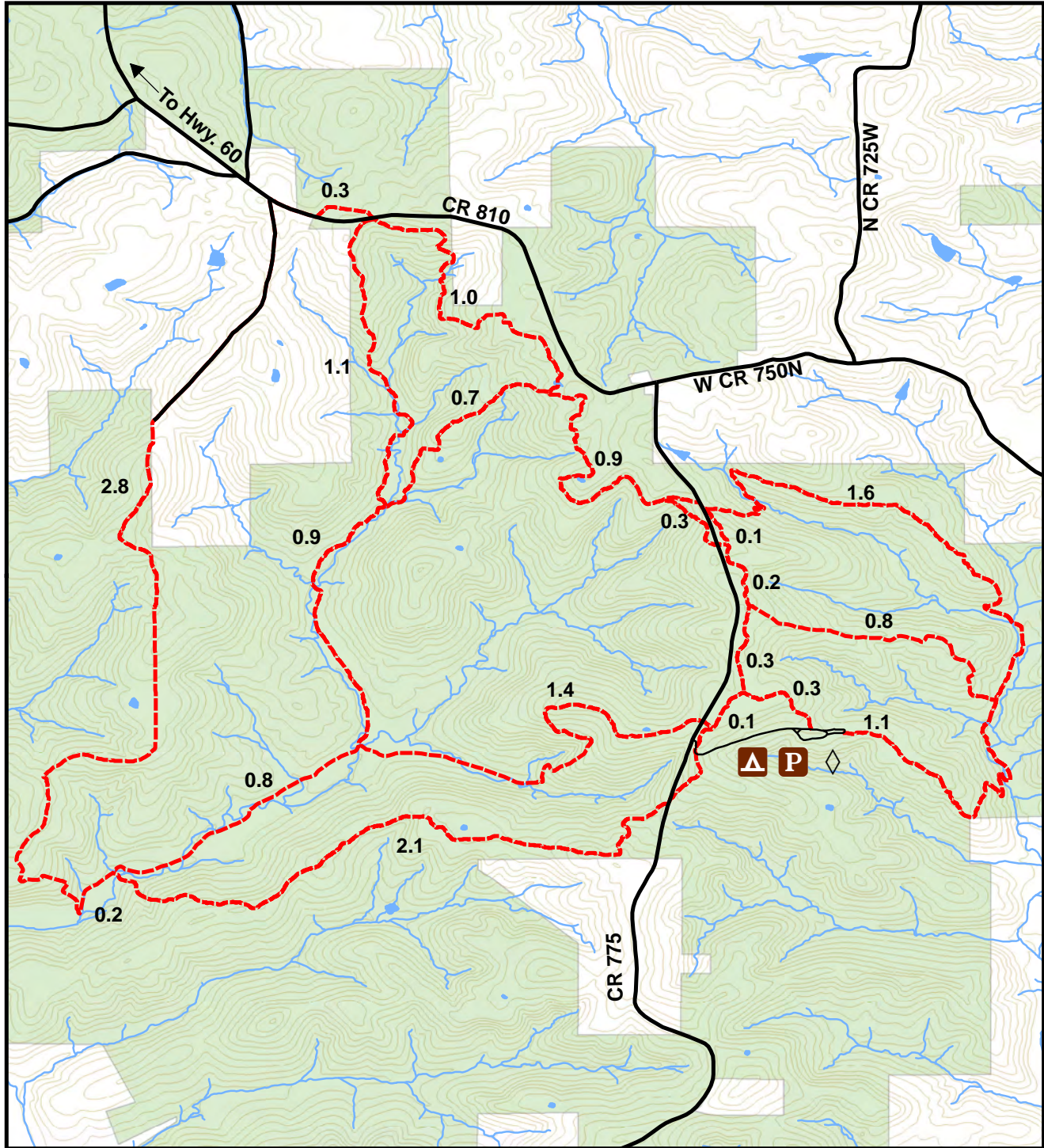
For More Information

Hoosier National Forest
811 Constitution Avenue, Bedford, IN 47421
(812) 275-5987; Toll Free: 1-866-302-4173

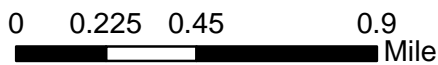
www.fs.fed.us/r9/hoosier

USDA is an equal opportunity provider and employer.

Shirley Creek Trail



Large Print Copies Available



eengstrom 2/20/2015



Legend

- Trail
- Road
- Stream
- 20' Contour
- Horse Trailer Parking
- Water
- Forest Service
- 0.2 Miles Between Intersections
- Camping
- Parking