
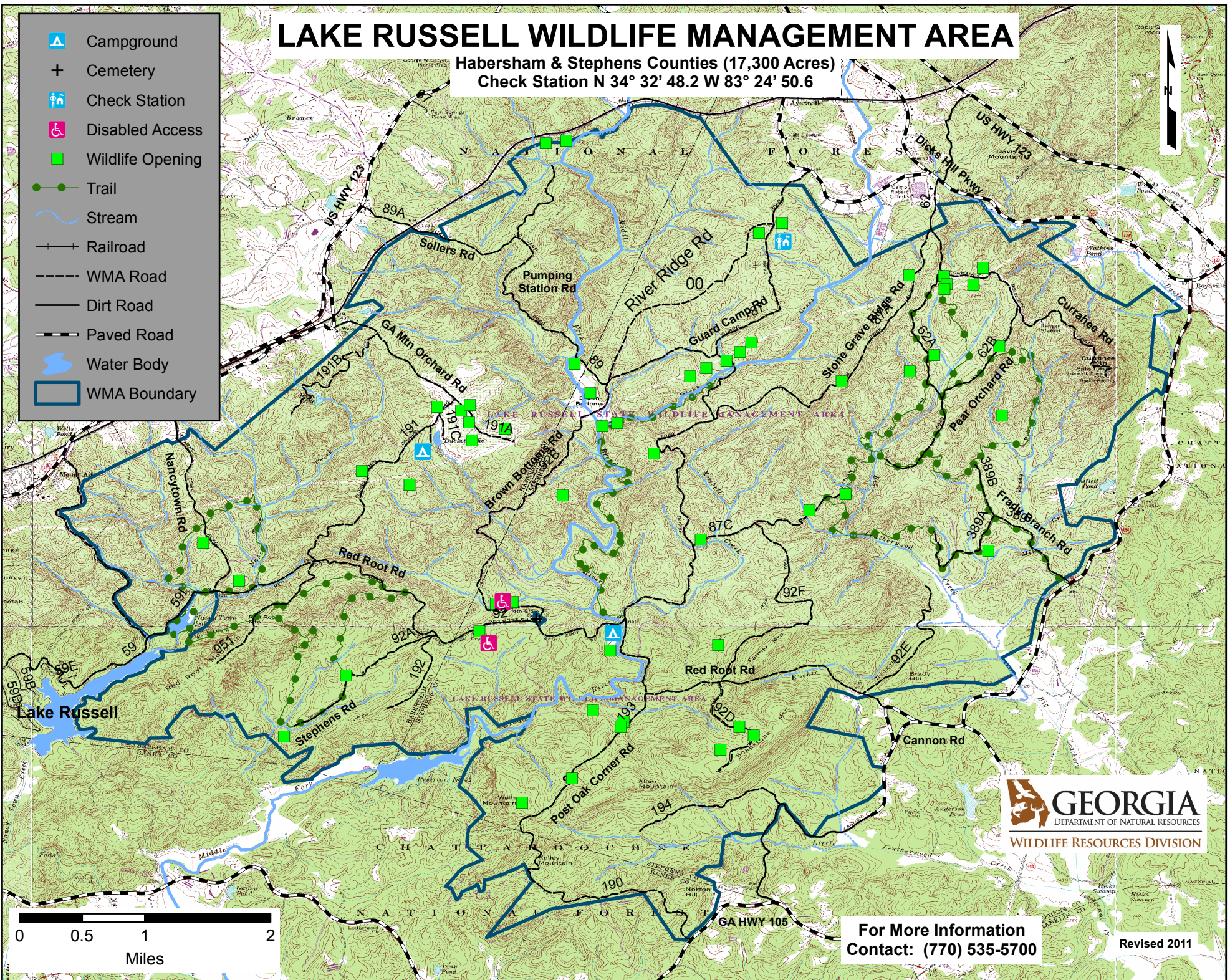


LAKE RUSSELL WILDLIFE MANAGEMENT AREA

Habersham & Stephens Counties (17,300 Acres)
Check Station N 34° 32' 48.2 W 83° 24' 50.6

-  Campground
-  Cemetery
-  Check Station
-  Disabled Access
-  Wildlife Opening
-  Trail
-  Stream
-  Railroad
-  WMA Road
-  Dirt Road
-  Paved Road
-  Water Body
-  WMA Boundary



 **GEORGIA**
DEPARTMENT OF NATURAL RESOURCES
WILDLIFE RESOURCES DIVISION

For More Information
Contact: (770) 535-5700

Revised 2011