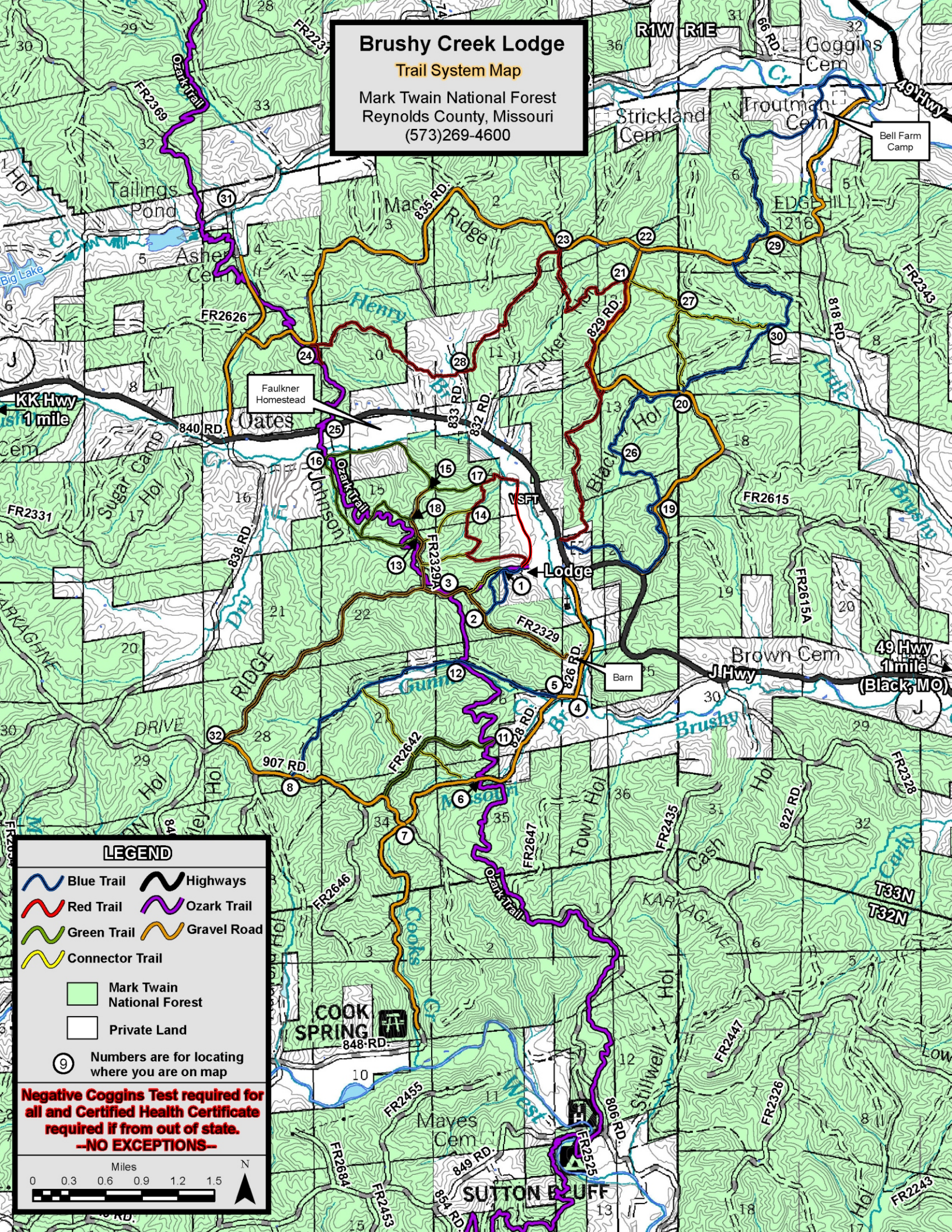


Brushy Creek Lodge

Trail System Map

Mark Twain National Forest
Reynolds County, Missouri
(573)269-4600



LEGEND

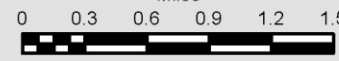
- Blue Trail
- Red Trail
- Green Trail
- Connector Trail
- Highways
- Ozark Trail
- Gravel Road
- Mark Twain National Forest
- Private Land

Numbers are for locating where you are on map

Negative Coggins Test required for all and Certified Health Certificate required if from out of state.
-NO EXCEPTIONS-

Miles

N



“C” = Bell Farm Camp

“L” = Lodge

To Sutton’s Bluff and back = 6 - 6.5 hours on gaited horses

To the Bell Farm and back = 5 - 5.5 hours on gaited horses

To the Lake and back = 4 - 4.5 hours on gaited horses

The color marker on the top is the trail that you are on. On the markers below that, if you go the direction of the arrow, you will get to that trail.

The Brown trail on the map is the Ozark Trail. That trail is marked with a white square with green writing. OT = Ozark Trail.

GPS Coordinates for the numbers on the map are as follows:

- | | |
|---------------------------|---------------------------|
| 1. N37 32.800 W91 00.914 | 17. N37 33.404 W91 01.097 |
| 2. N37 32.484 W91 01.091 | 18. N37 33.188 W91 02.093 |
| 3. N37 32.628 W91 01.402 | 19. N37 33.271 W90 59.478 |
| 4. N37 31.860 W91 00.276 | 20. N37 34.038 W90 59.296 |
| 5. N37 31.862 W91 00.443 | 21. N37 34.857 W90 59.742 |
| 6. N37 31.282 W91 01.154 | 22. N37 35.067 W90 59.611 |
| 7. N37 30.981 W91 01.853 | 23. N37 35.097 W91 00.342 |
| 8. N37 31.345 W91 02.867 | 24. N37 34.439 W91 02.559 |
| 9. N37 29.377 W91 01.743 | 25. N37 33.837 W91 02.526 |
| 11. N37 31.565 W91 01.043 | 26. N37 33.452 W90 59.865 |
| 12. N37 32.144 W91 01.317 | 27. N37 34.663 W90 59.257 |
| 13. N37 32.979 W91 01.825 | 28. N37 34.179 W91 01.244 |
| 14. N37 33.251 W91 01.174 | 29. N37 35.174 W90 58.395 |
| 15. N37 33.386 W91 01.577 | 30. N37 34.531 W90 58.480 |
| 16. N37 33.622 W91 02.443 | 31. N37 35.324 W91 03.579 |
| | 32. N37 31.617 W91 03.468 |

Lodge N37 32.800 W91 00.671

Suttons Bluff N37 28.720 W91 00.343

Valley Springs Foxtrotter Barn N37 33.368 W91 00.767