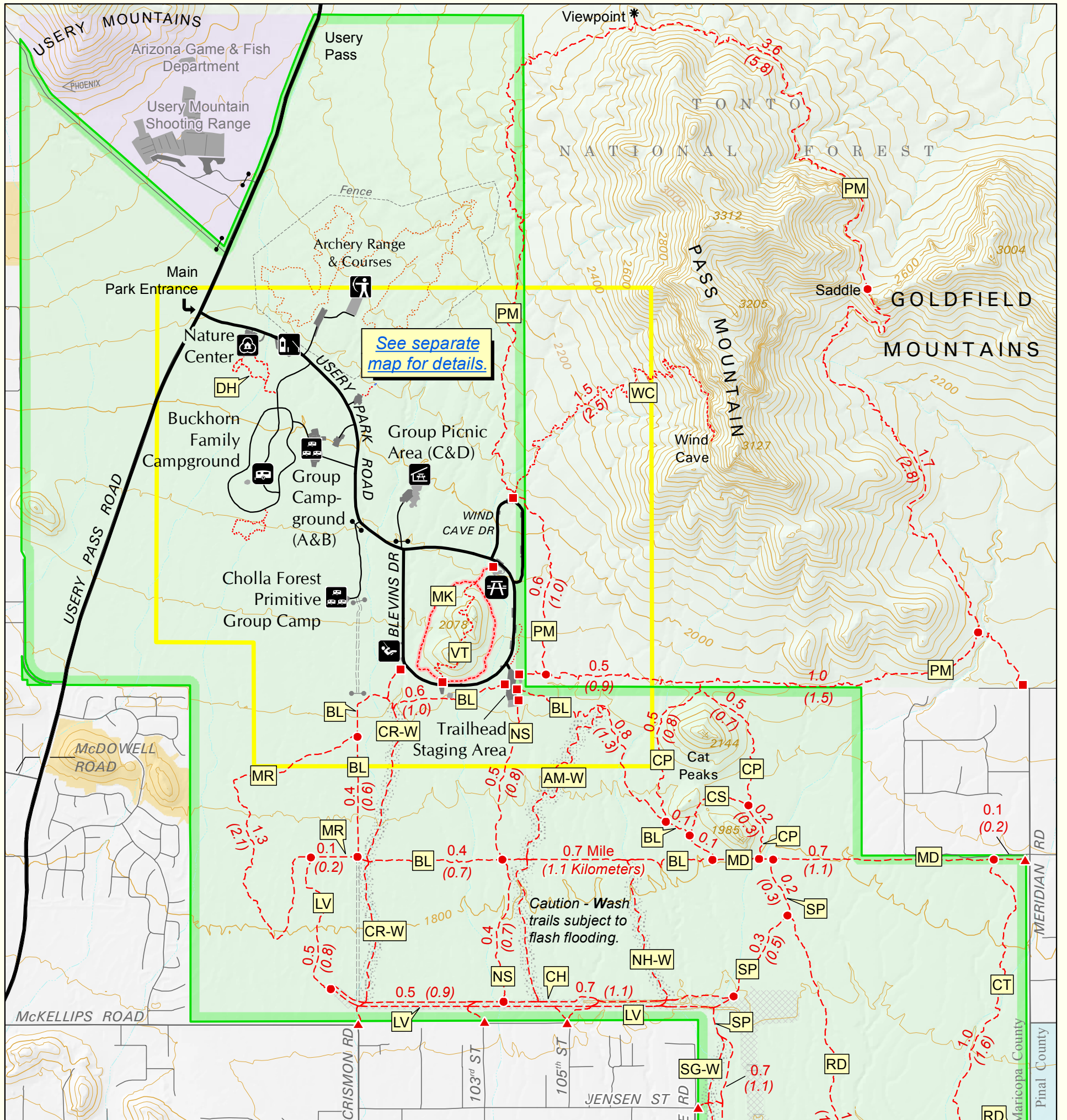
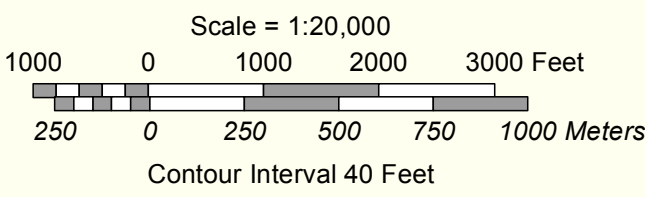


Usery Mountain Regional Park



- FACILITIES**
- Entrance station
 - Nature Center
 - Archery range
 - Family campground
 - Group campground (By reservation)
 - Group picnic area (By reservation)
 - Picnic areas and playgrounds (See separate close-up map.)
 - Playground



- Shared-use trail
- Hiker-only trail
- Barrier-free trail
- Archery course
- Trailhead
- Access gate
- Service road
- Locked gate
- Flash-flood hazard
- Flood control facilities
- Regional Park boundary
- Bureau of Land Management
- State trust land
- Reclamation
- Private preserve
- Private

Trail Code	Trail Name	Length Mi	Length (Km)	Use Rating
AM-W	Amigos Wash	1.2	(1.9)	S
BL	Blevins	3.0*	(4.9)*	S
CP	Cat Peaks	1.1	(1.8)	S
CS	Cat Peaks Pass	0.3	(0.4)	S
CH	Channel	1.2	(2.0)	S
CT	County Line	1.0	(1.6)	S
CR-W	Crismon Wash	0.9	(1.5)	S
DH	Desert Hawk	0.5*	(0.8)*	H
LV	Levee	1.6	(2.6)	S
MD	Meridian	0.9	(1.5)	S
MK	Merkle	0.9*	(1.4)*	BF
MR	Moon Rock	1.4	(2.3)	S
NH-W	Nighthawk Wash	0.5	(0.7)	S
NS	Noso	1.0	(1.5)	S
PM	Pass Mountain	7.5*	(12.0)*	S
RD	Ruidoso	1.3	(2.2)	S
SG-W	Signal Wash	0.5	(0.8)	S
SP	Spillway	1.2	(1.9)	S
VT	Vista	0.5	(0.8)	H
WC	Wind Cave	1.5	(2.5)	H

- Use**
- BF = Barrier-free/interpretive
 - H = Hike only
 - S = Shared use
- Rating**
- Easiest
 - Easy
 - Moderate
 - ◊ Moderate - Difficult
 - ◆ Difficult

- Distances shown at left are one-way unless indicated by * for loop distance; map does not show round-trip distances.

- Distances on map are for segments between selected trail junctions (●), or junction and trailhead. Due to limited space, priority for distances has been given to non-wash trails.

- Due to rounding, segment lengths on map may not add up to trail totals shown above.

- Most trails are shared-use. Shared-use means all non-motorized access is allowed.



Maricopa County
Parks and Recreation